

An aerial photograph of the Walter M. Williams High School campus. The main building is a large, multi-story red brick structure with a central entrance and several wings. A parking lot with many cars is located in front of the building. The campus is surrounded by green trees and a grassy area. The text "Walter M. Williams High School" and "Bond Project Progress Report" is overlaid on the image in a black serif font.

# Walter M. Williams High School

## Bond Project Progress Report

October 26, 2020

# WALTER M. WILLIAMS HIGH SCHOOL BOND PROJECT PROGRESS REVIEW BOARD PRESENTATION

OCTOBER 26, 2020



**SUD ASSOCIATES, P.A.**

CONSULTING ENGINEERS  
LICENSE NO. C-0315

1813 CHAPEL HILL ROAD  
DURHAM, NORTH CAROLINA  
(919) 493-8277

80 SOUTHSIDE AVENUE, SUITE 300  
ASHEVILLE, NORTH CAROLINA  
(828) 286-4691

## Base Bid

Main Entrance, Convert to secure control area for validating access need

Rear Entry Points, secure with electronic access control

HVAC, including Central Plant

Plumbing - Auditorium

Electrical (Auditorium House Lighting)

Structural - Distress in brick wall supporting stair

Arch - Auditorium, Toilets & Flooring

Arch - Auditorium Seating (Refurbish) \*

Electrical (Service, Panels and Feeders)

Fire Alarm

Media Center Architectural Upgrades

Plumbing - Classroom Bldg. Ground Floor toilets for occupancy count

Architectural - Classroom Bldg. Ground Floor toilets for occupancy count

## Alternates

Alternate 1, Main Floor and Second Floor Toilets (North)

Alternate 1, Arch

Alternate 1, Plumbing

Alternate 2, Main Floor and Second Floor Toilets (South)

Alternate 2, Arch

Alternate 2, Plumbing

Alternate 3, Ground Floor Toilets

Alternate 3, Arch

Alternate 3, Plumbing

\* Alternate Auditorium Seating - Depending on cost of refurbishing vs. replacement of auditorium seats, seat replacement may become an alternate.

**WALTER M. WILLIAMS HIGH SCHOOL  
BOND PROJECT PROGRESS REVIEW  
BOARD PRESENTATION  
GROUND FLOOR**

**BID LEGEND**

- BASE BID
- ALTERNATE BID NO. 1
- ALTERNATE BID NO. 2
- ALTERNATE BID NO. 3

**SUMMARY OF WORK BY BID AND ALTERNATES**

**BASE BID**

**1. Auditorium Upgrades**

**A. Architectural**

- Toilet Upgrade/Expansion Required for Occupancy Counts (Fixtures & Finishes)
- Flooring
- Seating (Refurbish)

**B. HVAC - Replace DX systems with Chilled/Hot Water Air Handling Units**

**C. Plumbing - Toilet Upgrades**

**D. Electrical**

- House Lighting
- Service Panels & Feeders

**E. Fire Alarm**

**2. Structural Repairs**

**3. Ground Floor Toilets Required for Occupancy Counts (Fixtures & Finishes)**

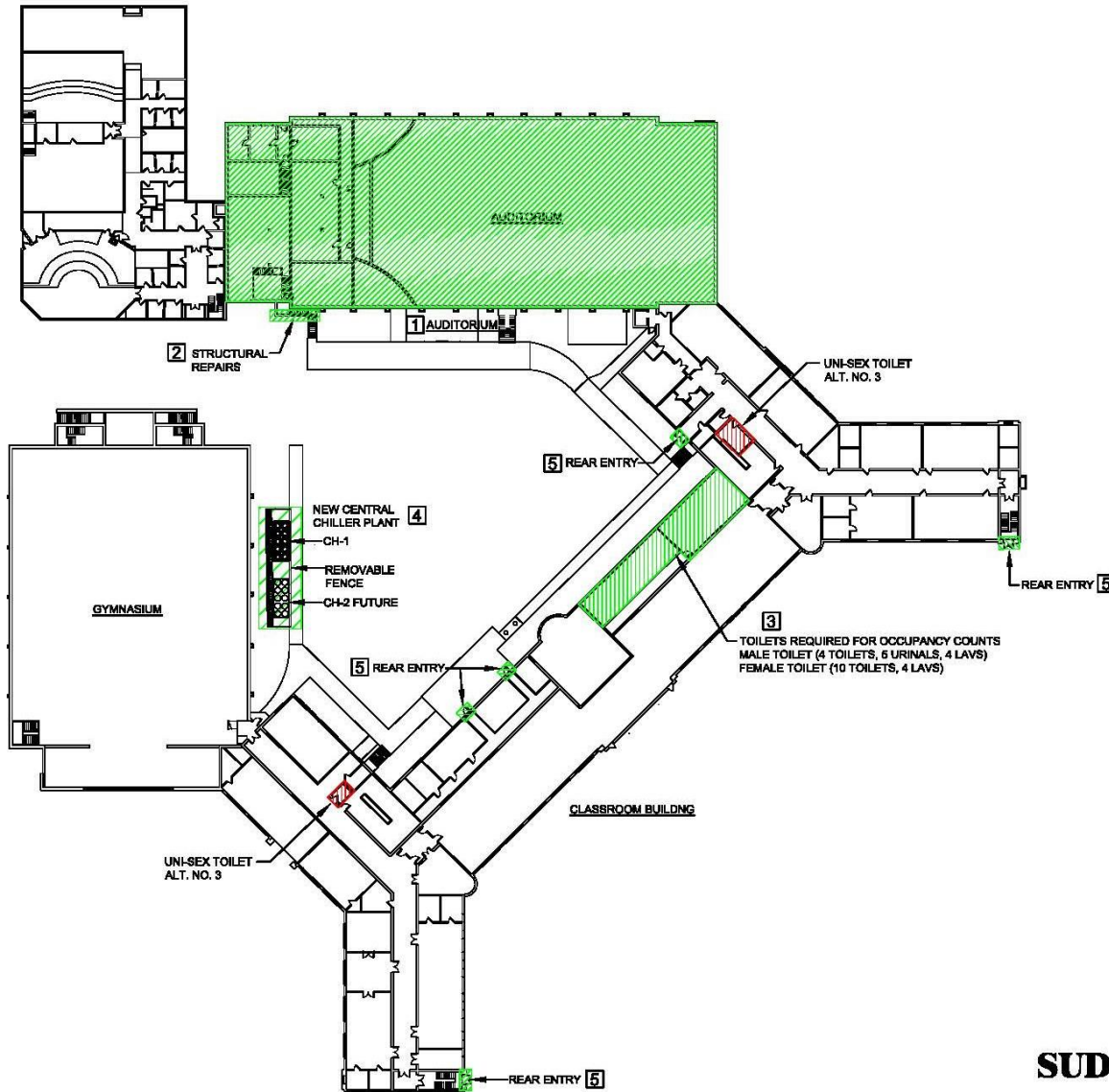
**4. Central Chiller Plant**

**5. Rear Entry Points - Electronic Access Control**

**ALTERNATE BID NO. 3**

**Ground Floor Uni-sex Toilet Upgrades (Fixtures & Finishes)**

- Architectural
- Plumbing



**WILLIAMS HIGH SCHOOL - GROUND FLOOR**

**SUD ASSOCIATES, P.A.**   
CONSULTING ENGINEERS  
LICENSE NO. C-0316

1813 CHAPEL HILL ROAD  
DURHAM, NORTH CAROLINA  
(919) 483-5277

90 SOUTH-SIDE AVENUE, SUITE 300  
ASHEVILLE, NORTH CAROLINA  
(828) 265-4881



WALTER M. WILLIAMS HIGH SCHOOL  
BOND PROJECT PROGRESS REVIEW  
BOARD PRESENTATION

MAIN FLOOR

BID LEGEND

- BASE BID
- ALTERNATE BID NO. 1
- ALTERNATE BID NO. 2
- ALTERNATE BID NO. 3

SUMMARY OF WORK BY BID AND ALTERNATES

**BASE BID**

1. Auditorium Upgrades

A. Architectural

- Toilet Upgrade/Expansion Required for Occupancy Counts (Fixtures & Finishes)
- Flooring
- Seating (Refurbish)

B. HVAC - Replace DX Systems with Chilled/Hot Water Air Handling Units

C. Plumbing - Toilet Upgrades

D. Electrical

- House Lighting
- Service Panels & Feeders

E. Fire Alarm

2. Main Entrance - Security Control Area

3. Rear Entry Points - Electronic Access Control

4. Fine Arts - Replace DX Air Handling Unit with Chilled/Hot Water Air Handling Unit

**ALTERNATE BID NO. 1**

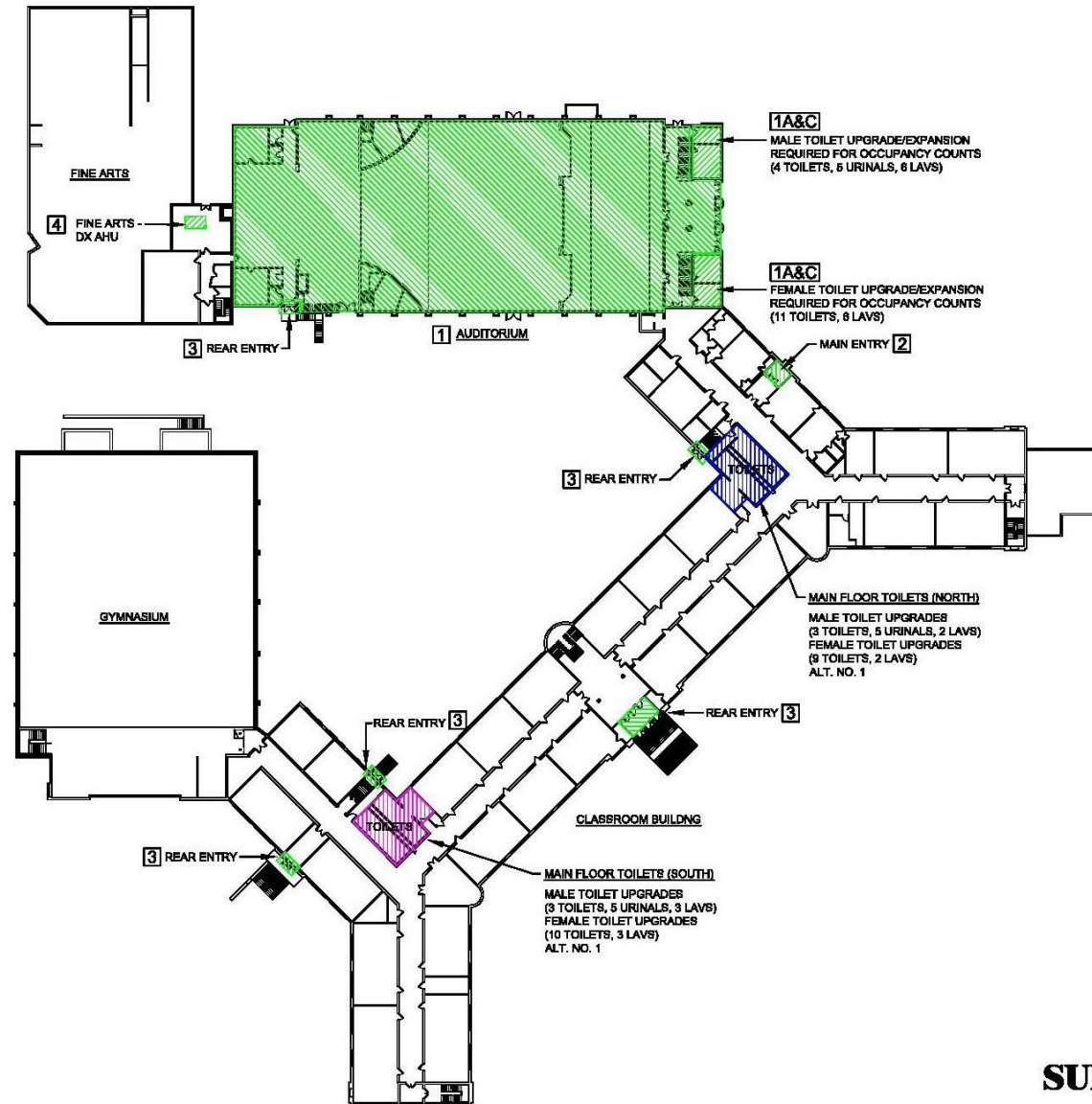
Main Floor Toilets (North) Upgrades (Fixtures & Finishes)

- Architectural
- Plumbing

**ALTERNATE BID NO. 2**

Main Floor Toilets (South) Upgrades (Fixtures & Finishes)

- Architectural
- Plumbing



**WILLIAMS HIGH SCHOOL - MAIN FLOOR**

**SUD ASSOCIATES, P.A.**

CONSULTING ENGINEERS  
LICENSE NO. C-0315

1813 CHAPEL HILL ROAD  
DURHAM, NORTH CAROLINA  
(919) 483-5277

80 SOUTHSIDE AVENUE, SUITE 300  
ASHEVILLE, NORTH CAROLINA  
(828) 255-4881

WALTER M. WILLIAMS HIGH SCHOOL  
BOND PROJECT PROGRESS REVIEW  
BOARD PRESENTATION

SECOND FLOOR

BID LEGEND

- BASE BID
- ALTERNATE BID NO. 1
- ALTERNATE BID NO. 2
- ALTERNATE BID NO. 3

SUMMARY OF WORK BY BID AND ALTERNATES

BASE BID

1. Auditorium Upgrades

A. Architectural

- Toilet Upgrade/Expansion Required for Occupancy Counts (Fixtures & Finishes)
- Flooring
- Seating (Refurbish)

B. HVAC - Replac DX Systems with Chilled/Hot Water Air Handling Units

C. Plumbing - Toilet Upgrades

D. Electrical

- House Lighting
- Service Panels & Feeders

E. Fire Alarm

2. Media Center - Architectural Upgrades

- Demolish Existing Carpet
- New LVT Floor Tiles and New Rubber Base (Owner's Preference Over New Carpet)
- New Acoustical Wall Panels and/or Acoustical Panels Suspended from the Ceiling

ALTERNATE BID NO. 1

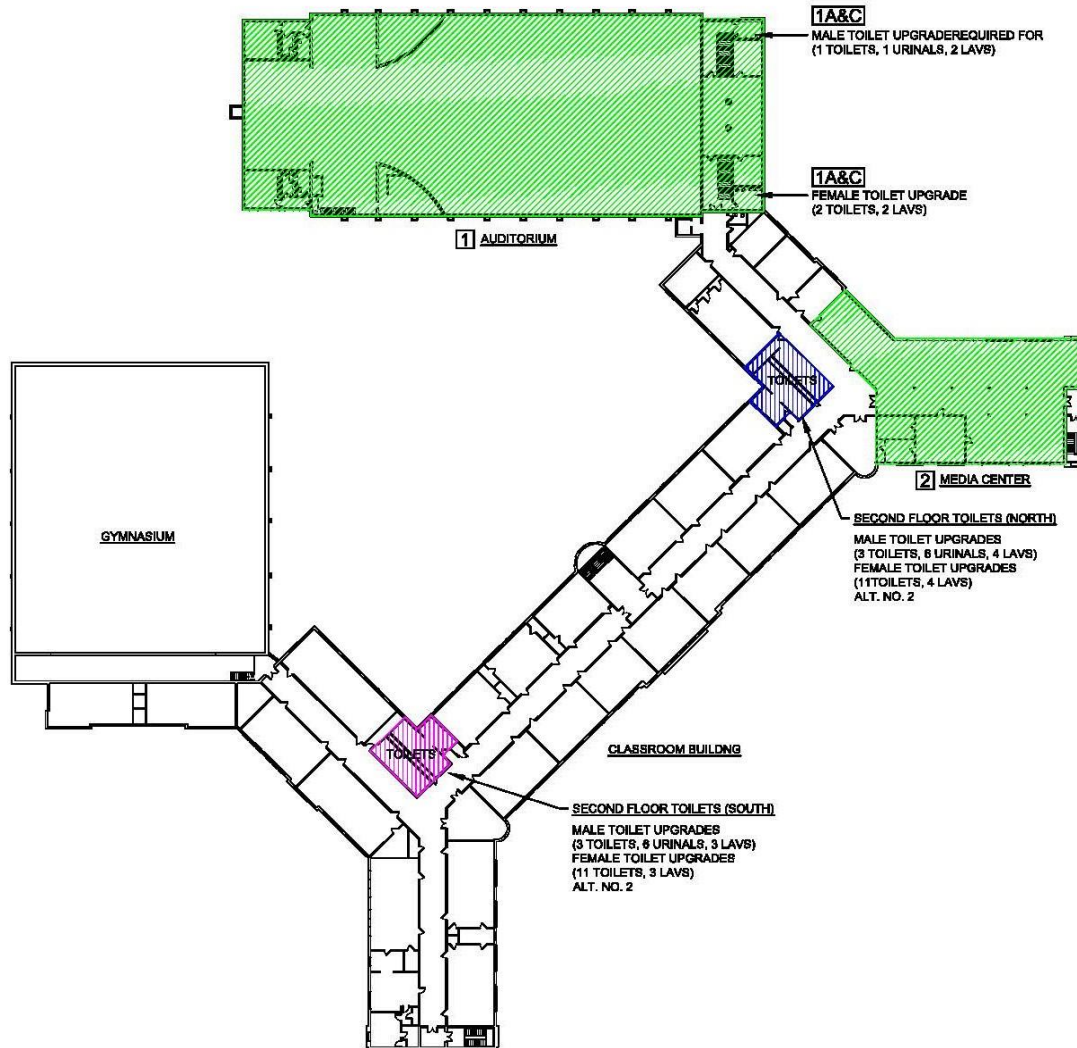
Second Floor Toilets (North) Upgrades (Fixtures & Finishes)

- Architectural
- Plumbing

ALTERNATE BID NO. 2

Second Floor Toilets (South) Upgrades (Fixtures & Finishes)

- Architectural
- Plumbing



WILLIAMS HIGH SCHOOL - SECOND FLOOR

**SUD ASSOCIATES, P.A.**   
CONSULTING ENGINEERS  
LICENSE NO. C-0316

1813 CHAPEL HILL ROAD  
DURHAM, NORTH CAROLINA  
(919) 463-5277

90 SOUTHSIDE AVENUE, SUITE 300  
ASHEVILLE, NORTH CAROLINA  
(828) 255-4991



# Model 91.12.119.12 Millennium



## No. 91 Millennium

- the Millennium comes standard with 2" thick back poly
- nominal back height is 34"
- rear panel of the No. 91 back is one-piece injection molded, high impact HDPE
- inner upholstery panel is constructed of 5-ply, 7/16" plywood
- back wings are formed from 14 gauge steel
- available in 15 standard plastic colors
- available with an optional lumbar support
- available with tufted cover



## No. 12 Universal Seat

- The No. 12 Seat is available in a serpentine spring support component or with an ergonomic substrate and formed poly cushion
- The foundation is injection molded, glass filled polyethylene which is especially strong but not brittle
- The No. 12 Seat passes the 600 lb. static load test and surpasses 300,000 cycles without failure in the ASTM-851-87 Test Method for Self Rising Seat Mechanisms
- Cover utilizes drawstring construction for an unwrinkled appearance and ease of replacement
- Seat pivot is covered to prevent tampering
- Available in full fold, 3/4 fold (standard) or 1/2 fold options
- Available in 15 standard plastic colors
- available with decorative wood veneer or upholstered bottom inserts
- Available with underseat book box

## No. 119 Deco Aisle Standard

- formed from class 25 grey iron
- solid wood arms
- available with concealed LED aisle lights
- available for floor mounting only

## No. 12 Chair Platform

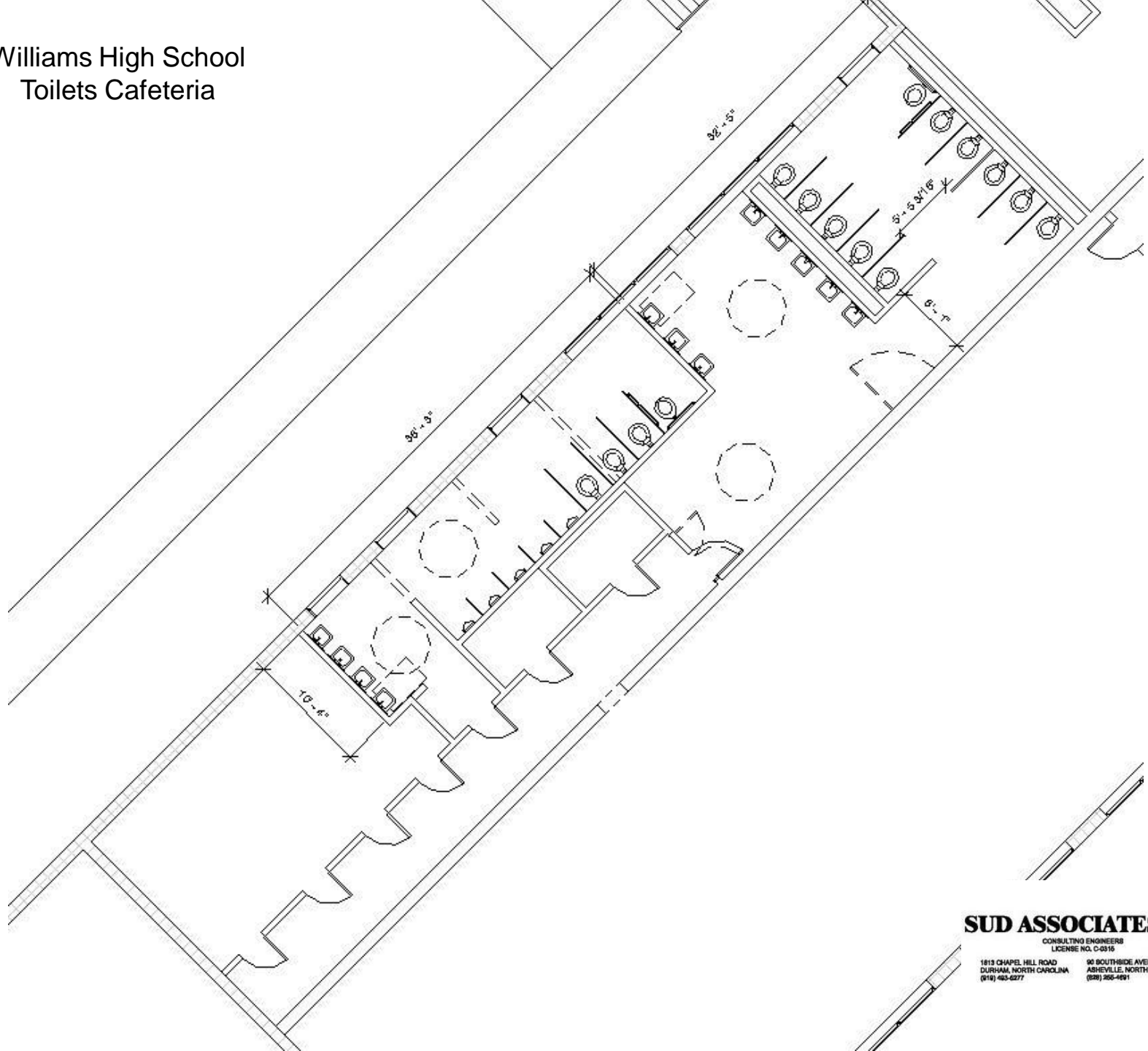
- formed from class 25 grey iron
- floor or riser mounted
- available with solid wood (stained or laminate surfaced) cupholder armrests or black, blow mold arms
- available in 15 standard powder coat colors

Williams High School  
Typical New Seat for Auditorium

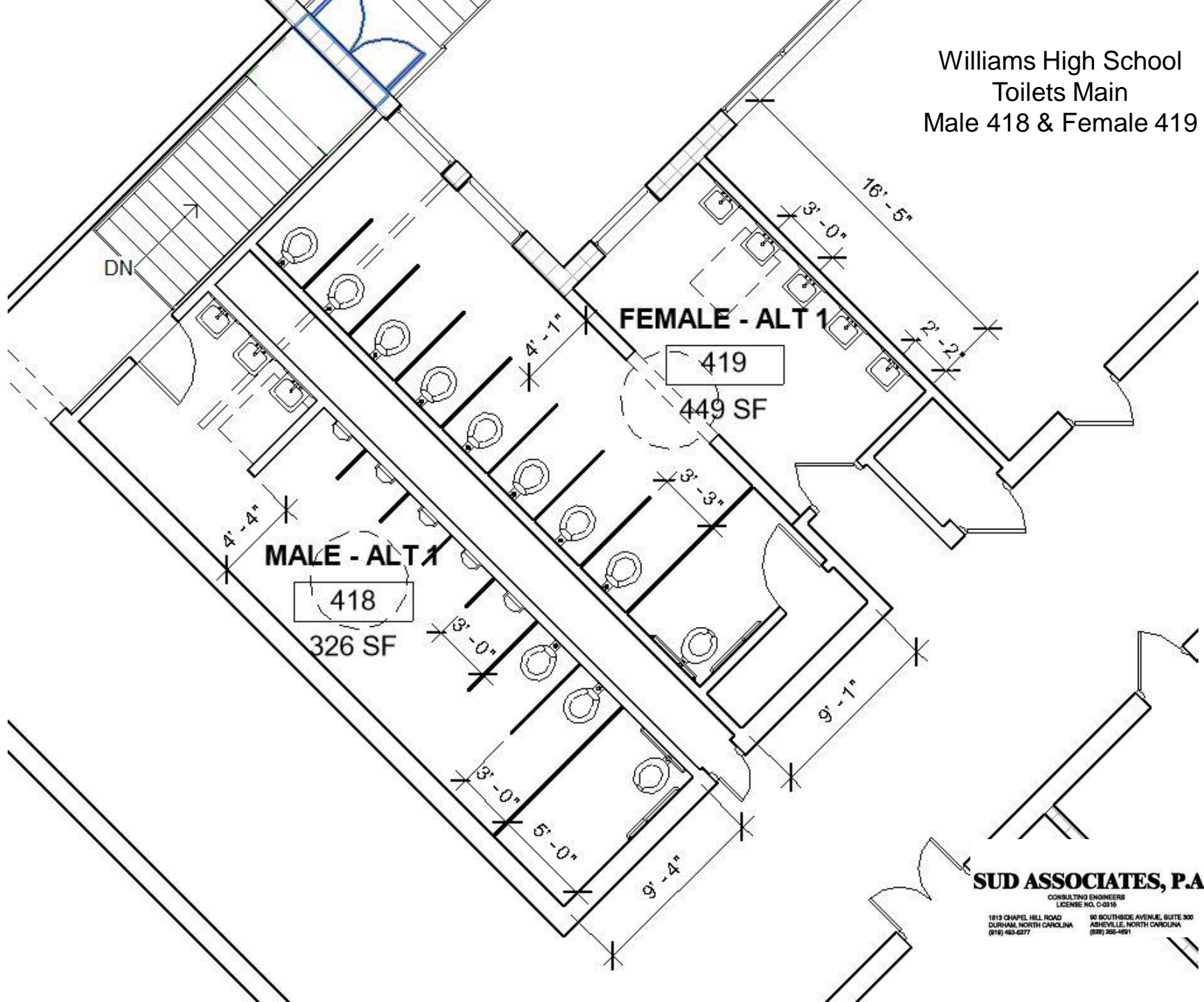
**SUD ASSOCIATES, P.A.**  
CONSULTING ENGINEERS  
LICENSE NO. C-0315  
1813 CHAPEL HILL ROAD  
DURHAM, NORTH CAROLINA  
(919) 483-6277  
96 BOUTSIDE AVENUE, SUITE 300  
ASHEVILLE, NORTH CAROLINA  
(828) 256-4091



Williams High School  
Toilets Cafeteria

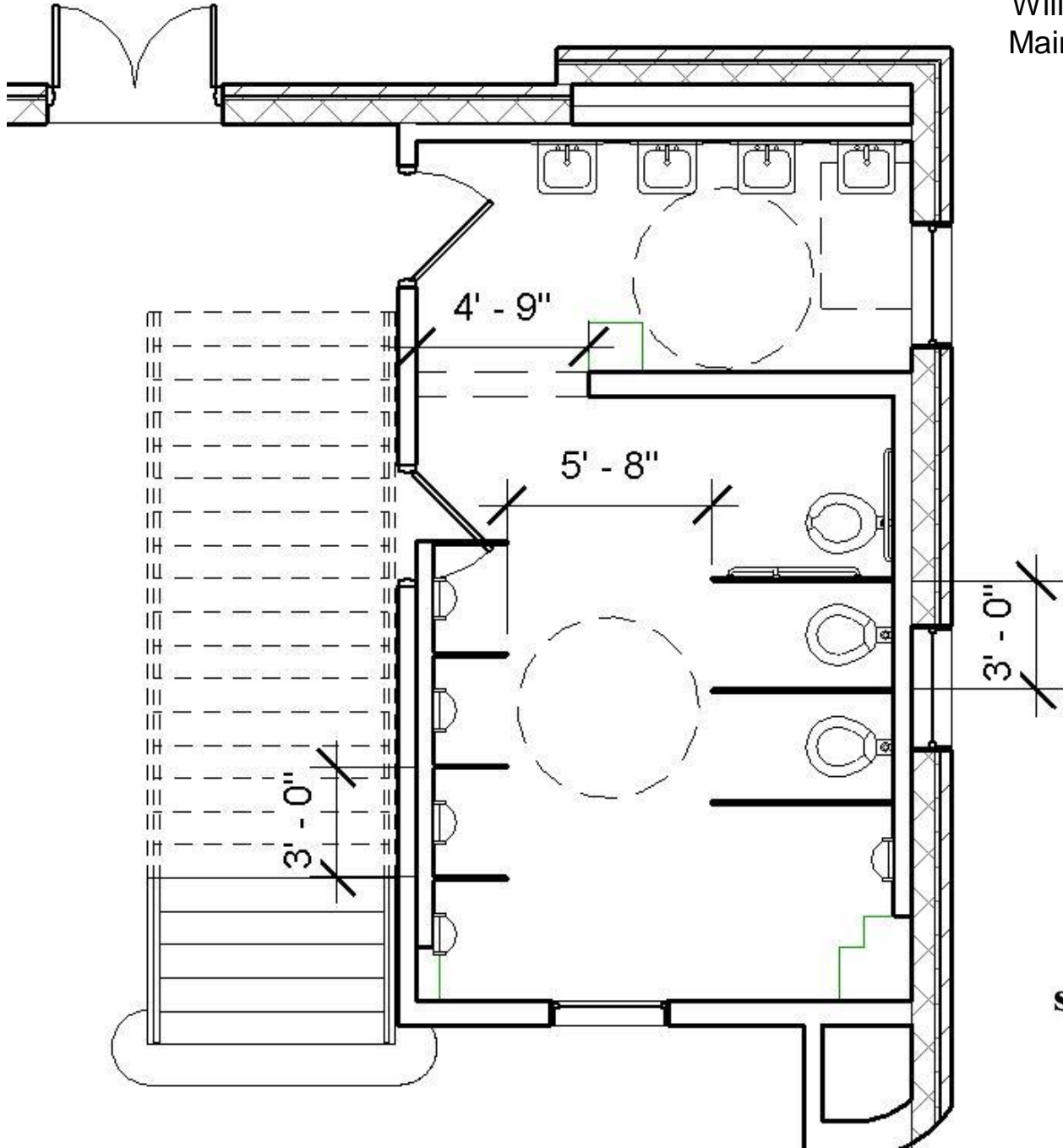


Williams High School  
Toilets Main  
Male 418 & Female 419

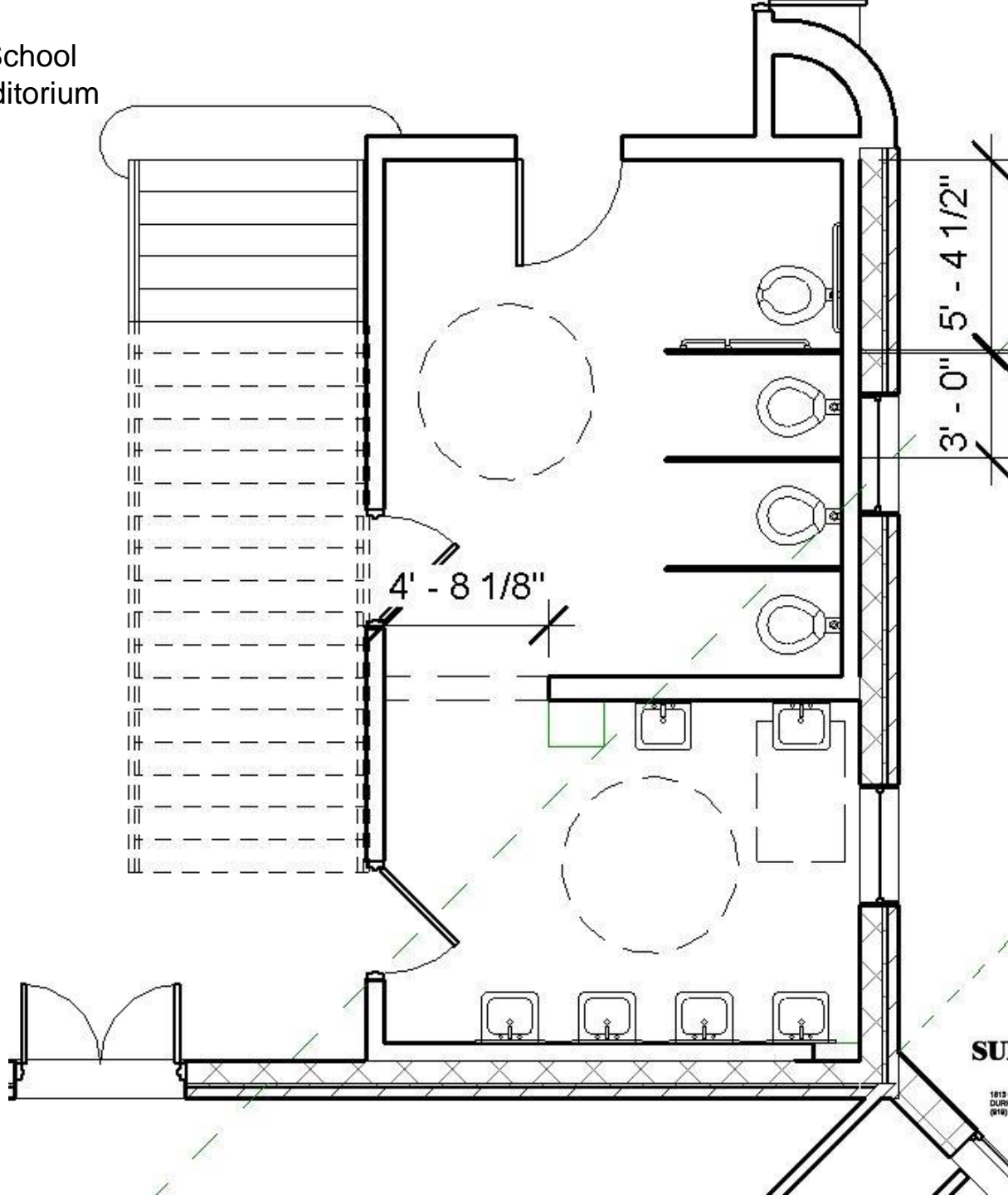




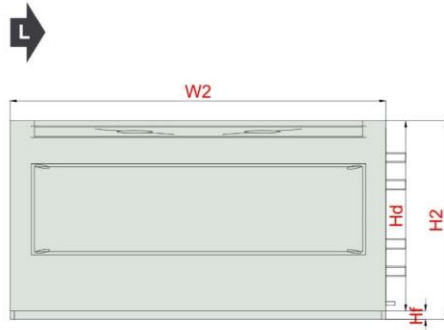
Williams High School  
Main Male Auditorium



Williams High School  
Main Female Auditorium



Front View (left)



Front View (right)



Top View



Make slide of  
this inside red  
area

Sizes [in]

Air intake Supply FS	124.0x32.0	Lt 260.5	Hid 68.1	Wi 138.0
Air intake Supply US	124.0x32.0	LtA 264.8	Hiu 68.1	W 141.9
Air outlet Supply US	96 x 48		Hi 68.1	
			H 75.2	
			Hf 3.1	

#### Unit design

Concealed Skeleton Design – all framework is inside the unit, unexposed to ambient air and secure against thermal-bridging and condensation.

Casing mechanical strength (deflection): -10 in WC to +10 in WC; L=1/300 (model box EN 1886)

Casing Air Leakage: -1.6 in WC: 0.009 CFM/ft²; +2.8 in WC: 0.026 CFM/ft²

## Williams High School AHU Overview