

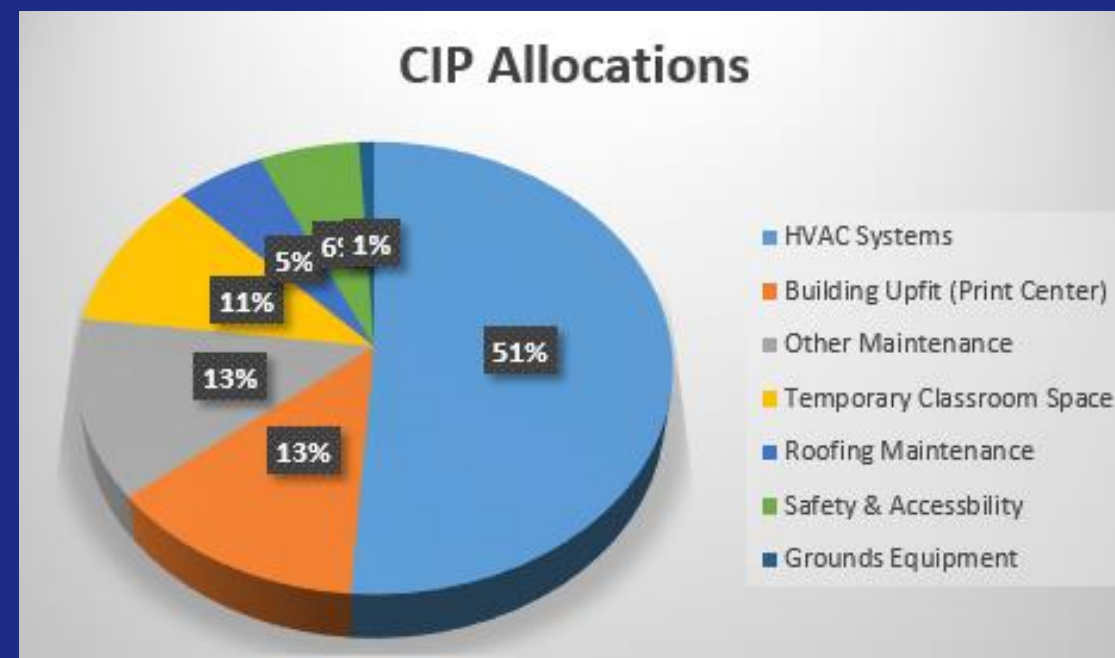
Alamance County Oversight Committee Meeting Project Update August 4, 2020





CIP 2019 to 2021 - \$1.2M

- HVAC Systems: \$ 613,750
- Building Upfit (Print Center) \$ 155,703
- Other Campus Maintenance: \$ 154,547
- Temporary Class Space: \$ 130,000
- Safety & Accessibility \$ 71,786
- Grounds Equipment \$ 10,714



Bond Projects - \$39.6M

\$17.56M	Biotechnology Center of Excellence and Parking
\$6.2M	Student Services Center
\$10.4M	Public Safety Training Center (off-site)
\$4.4M	Modernize Instruction Space/Child Care Center Upgrade
\$1M	East/West Locations (off-site)

Biotechnology Center of Excellence and Parking

Project Budget: \$17,560,000

Construction start: April 2021

Estimated completion: June 2022

Architect: Clark Nexsen

CM at Risk: The Christman Company

Building square footage: 33,000



Public Safety Training Center



Project Budget:	\$10,400,000
Construction start:	TBD
Estimated completion:	June 2023
Architect:	Moseley Architects
CM at Risk:	Samet Corporation

Student Services Learning & Development Center

Project Budget:	\$6,200,000
Construction start:	November 2021
Estimated completion:	November 2022
Architect:	FWA Group
CM at Risk:	NA
Building Square Footage:	27,400



Instructional Space/Child Care Expansion

Project Budget: \$4,440,000
Construction start: November 2022
Estimated completion: December 2023
Architect: TBD

Satellite East & West

Project Budget: \$1,000,000
Construction start: TBD
Estimated completion: TBD
Architect: TBD

Biotechnology Center of Excellence and Parking

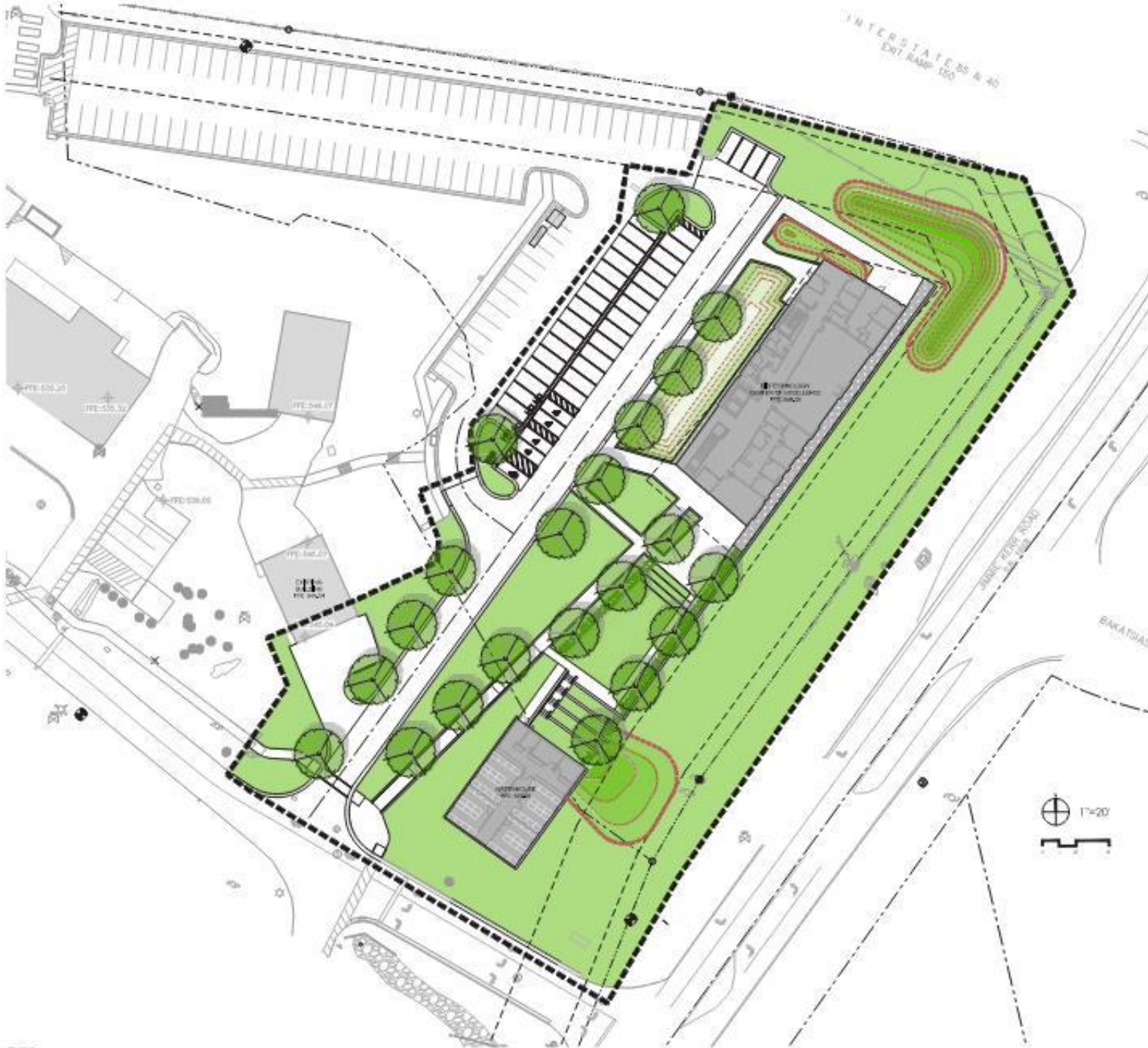
Mr. Chris Brasier
**Chief Practice and Culture Officer | Design
Director**

Clark Nexsen

Overall Project Schedule



Site Plan - Center of Excellence



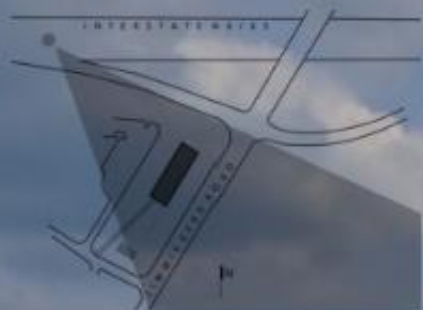
Site Plan - Remote Parking Site



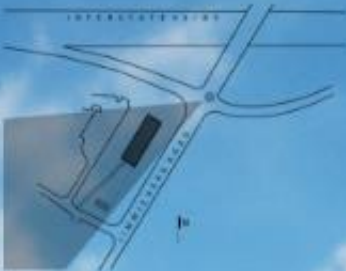
view from 40 west



view from 40 east



view from northeast



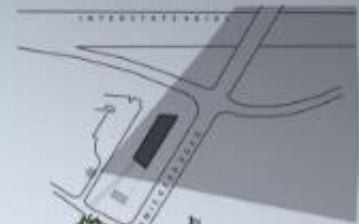
view from southeast



view from southwest



view from southwest



view from southwest



view from northwest





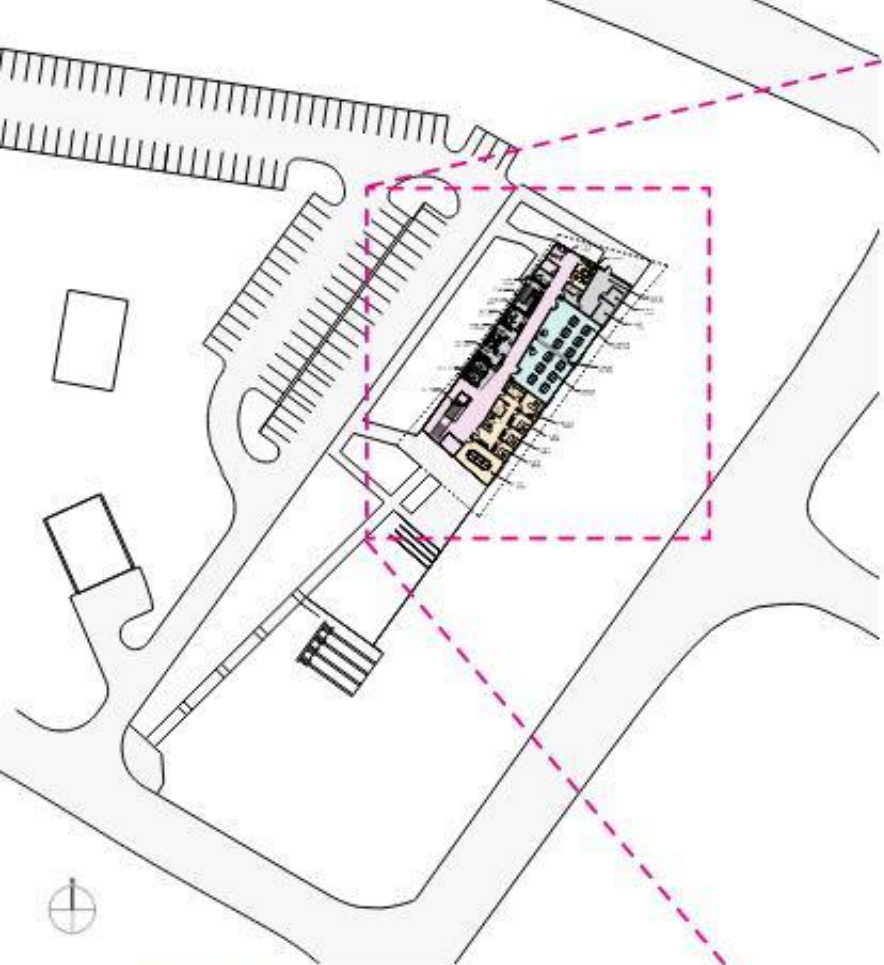
view from terraced seating

view from plaza seating



view from entry looking south

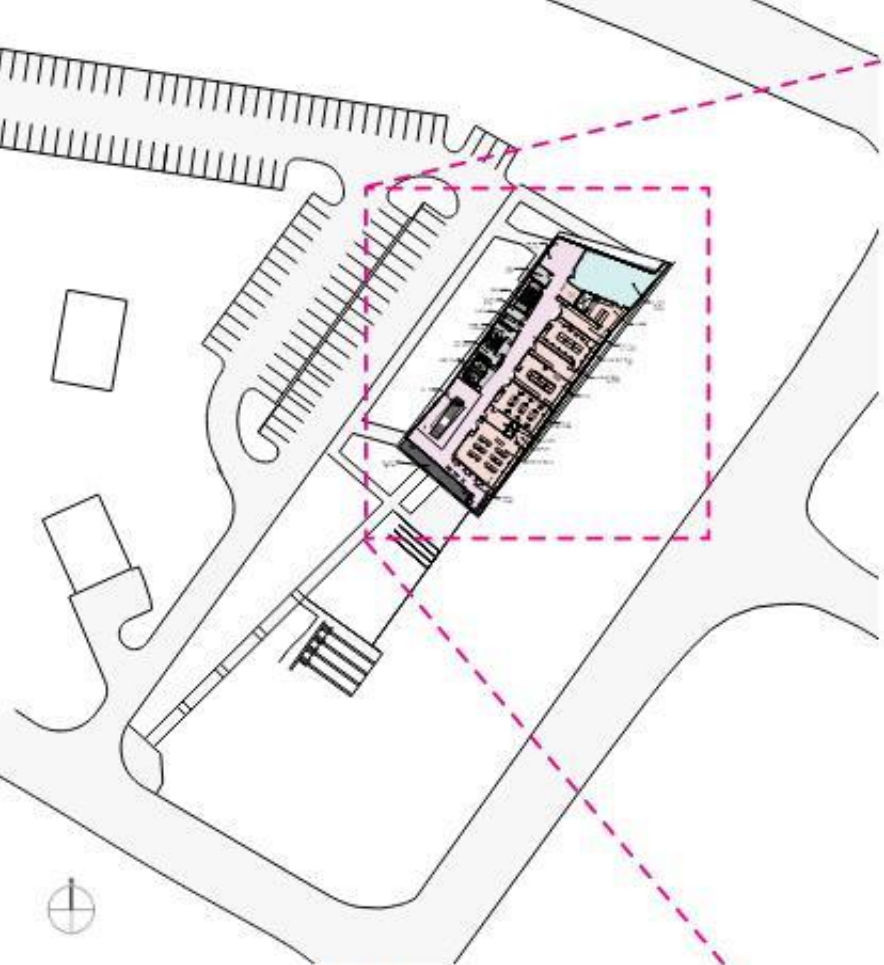




first floor

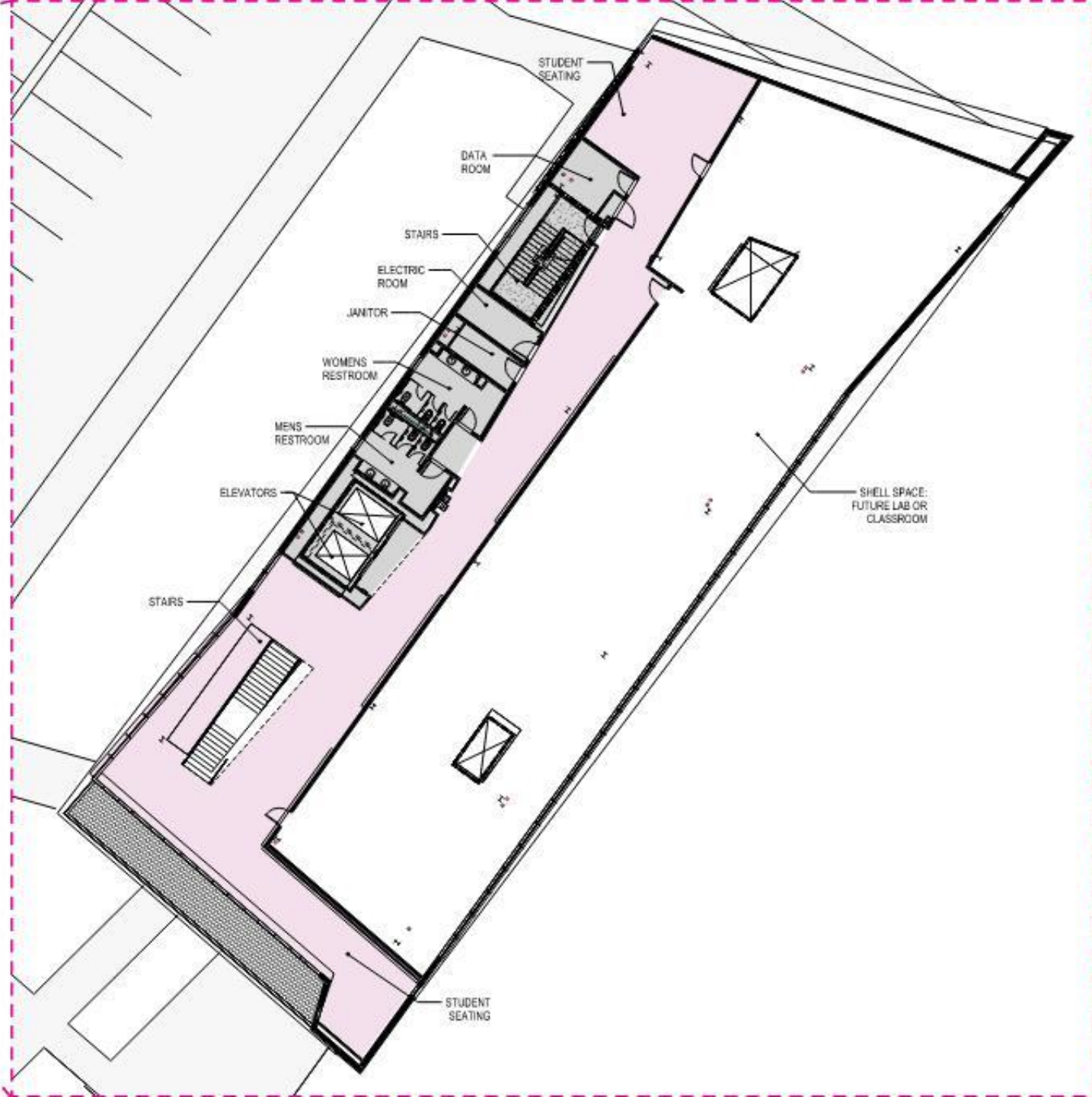
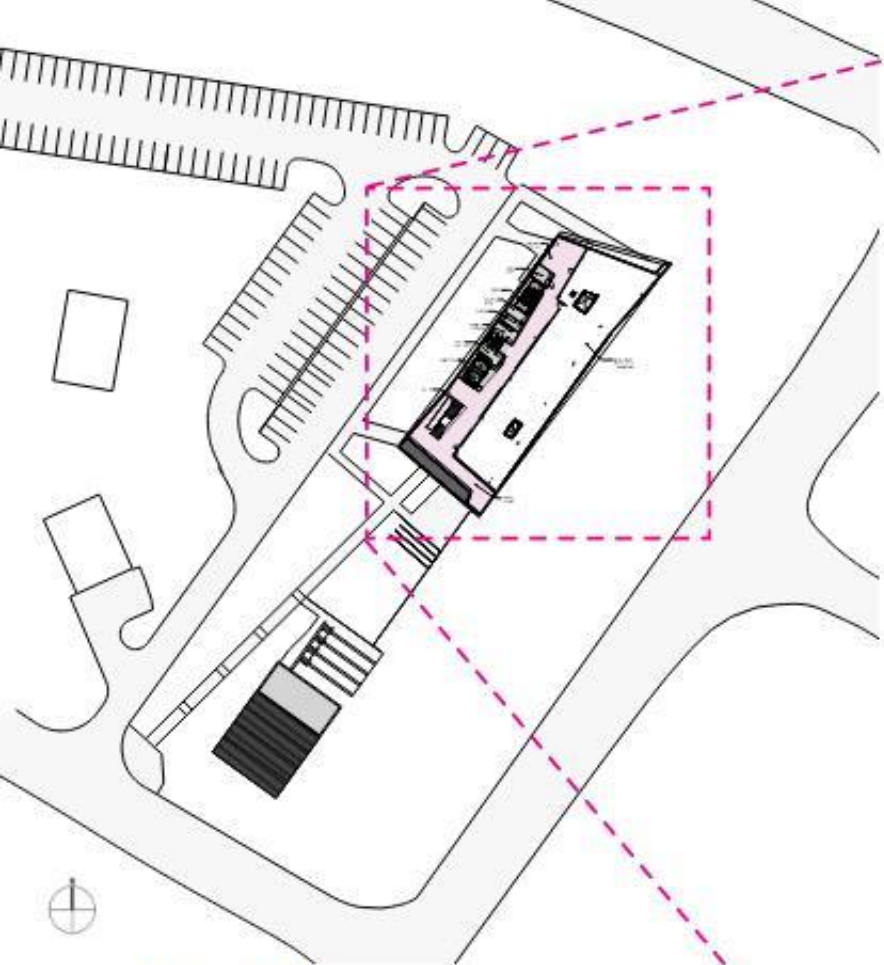
- STUDENT SPACE
- GENERAL CLASSROOMS
- OFFICE
- BUILDING SUPPORT







second floor

- STUDENT SPACE
- GENERAL TEACHING LAB
- DEDICATED TEACHING LABS



third floor

-  STUDENT SPACE
-  SHELL SPACE