



Summer 2020

Alamance-Burlington School System

Capital Projects



Roofs

- E.M. Holt- Complete
- Graham Middle- In Progress
- Western High- In Progress
- Sellars-Gunn- In Progress

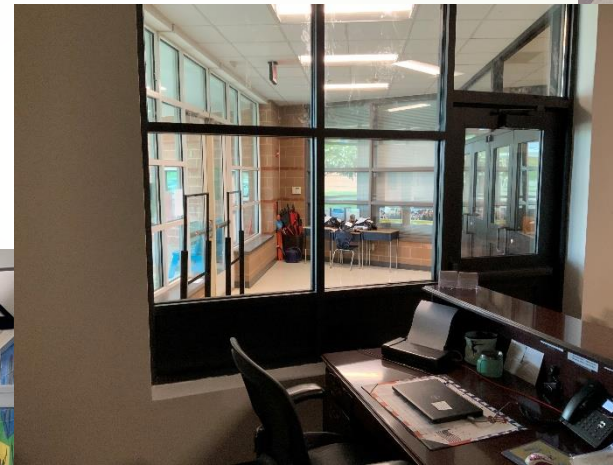
Painting

- Garrett Elementary School
- Hawfields Middle School
- Hillcrest Elementary School
- Smith Elementary School
- Williams High School



Safety Vestibules

- Highland Elementary School
- Hillcrest Elementary School
- Smith Elementary School



ADA Home Economic Stations

- Cummings High
- Eastern High
- Graham High
- Southern High
- Western High
- Williams High



Flooring

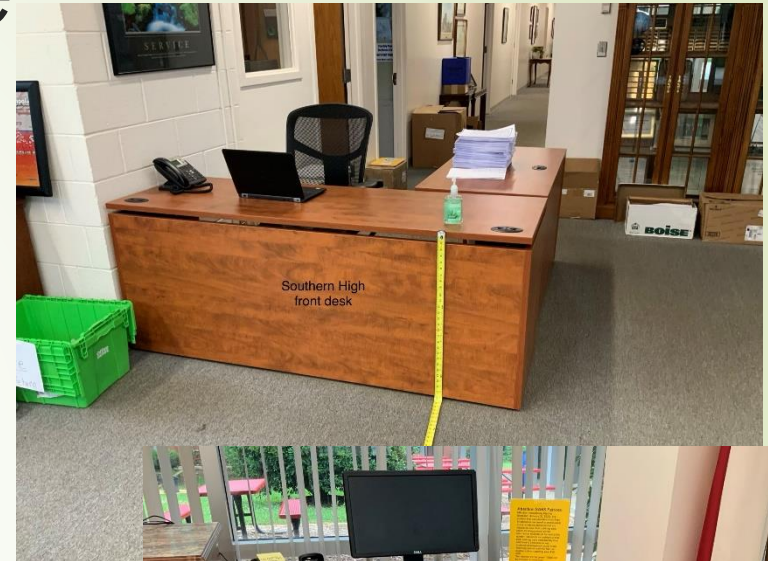
- Cummings High
- Graham High
- Garrett Elementary



Front Office ADA Furniture



- Cummings High
- Graham High
- Southern High
- Western High



Southern High front desk



Western High receptionist front desk



Western high front office visitor check in



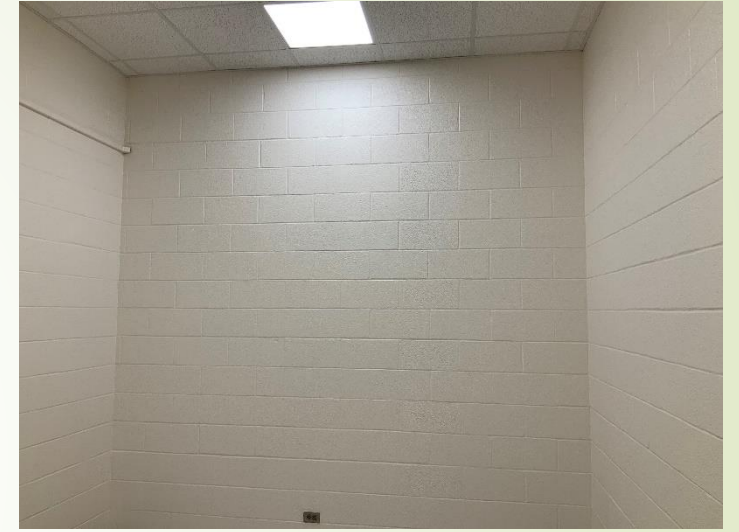
Southern High Visitor check in

ADA Parking

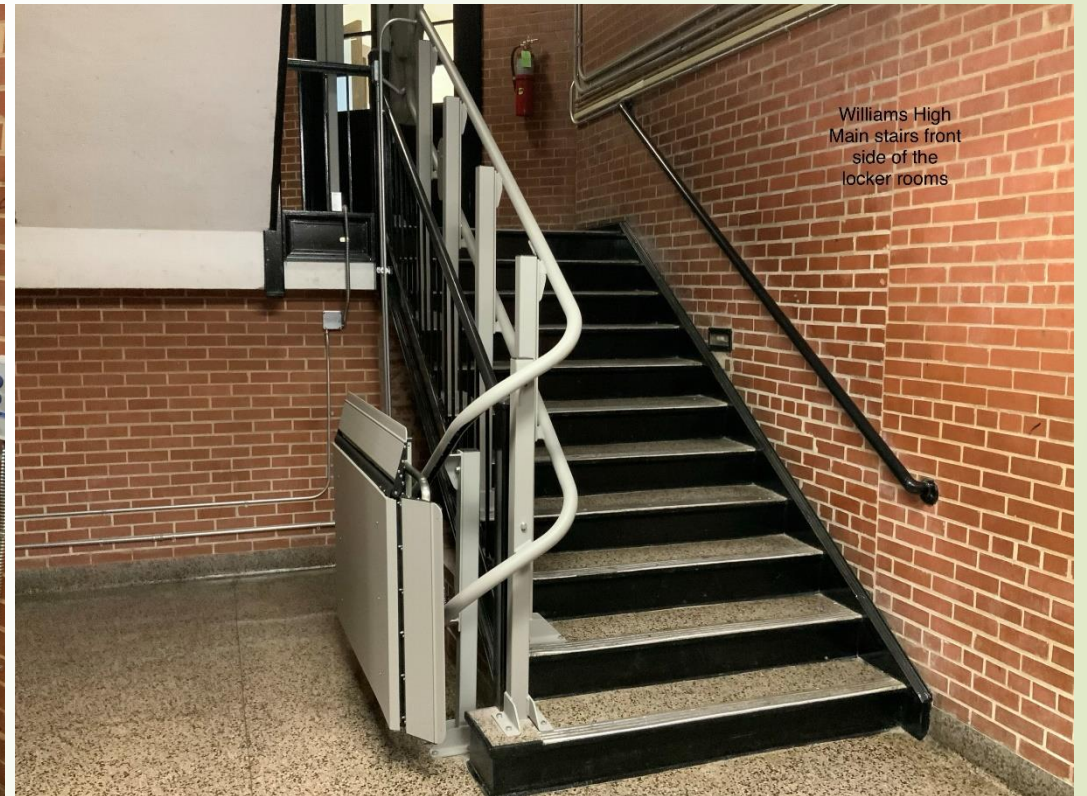
- Eastern High
- Cummings High



Cummings Fine Arts –Chorus Room



Williams High Wheel Chair Lifts



CHS Fire Doors



Hand Sanitizer Stations



Parking Lot Striping

- Broadview Middle
- Cummings High
- Ray Street Academy
- Turrentine Middle
- Eastlawn Elementary



Gym Floors

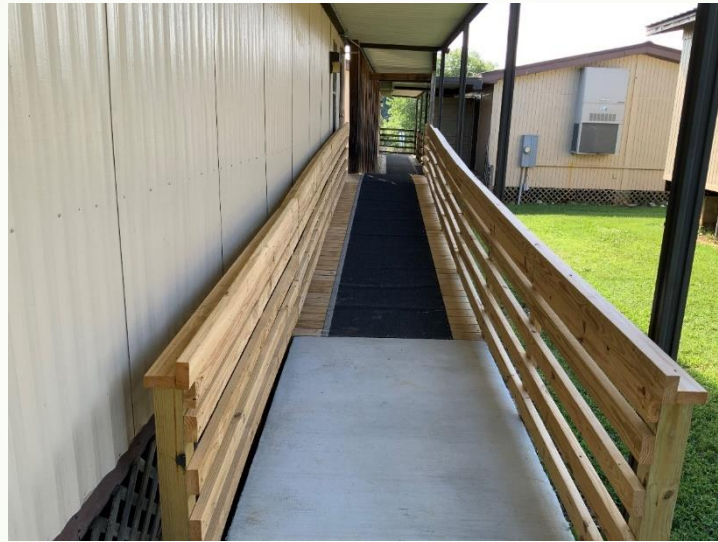


ADA Concrete

- Cummings High
- Graham High
- Williams High



South Graham Elementary Ramp and Step Reconstruction



E.M. Holt Awning



Williams Plaster Repair





Additional Activities

- ▶ Cameras Installed at Graham Middle and Turrentine Middle
- ▶ Eastern High Irrigation
- ▶ Track Repairs/Resurfacing (in progress) Eastern, Graham, and Williams High Schools
- ▶ Mobile Units moved to B. Everett Jordan
- ▶ Replacement ADA Water Fountains
- ▶ COVID 19 Preparations
- ▶ 2019-20 completed 7594 work orders



Bond Projects



New High School

- ▶ Land purchase completed. Recorded on June 29.2020. \$2,246,514.00
- ▶ Project in Design Development (DD) Phase
- ▶ Input was received from Students, Staff, Community, Athletic Directors, Central Office Staff, Board of Education, Child Nutrition as well as designers and CMR.
 - ▶ Focus points included classroom design, parking, student service areas, administration offices, Career and Technical Education Programs, athletic needs, data layout, security, kitchen design and kitchen equipment.
- ▶ September 2020 – DD phase Final, Cost estimates from CMR, Value Engineering if needed.
- ▶ October presentation to board
- ▶ Swepsonville Fire Department has submitted application to burn the houses on the property as a training exercise.

South Mebane Elementary

- ▶ Bid opening was July 22, 2020 at 3:00
- ▶ 12 General Contractors participated
- ▶ Morris-Berg conducted the bid opening
- ▶ Base bid range from \$6,132,000 to \$7,484,300.
- ▶ Frank L. Blum Construction presented lowest base bid as well as total bid to include all alternates. (\$6,379,000)
- ▶ Bond Money Breakdown
 - ▶ Total bond for project: \$8,482,000
 - ▶ Design Services, Owner Contingency, Material Testing : \$1,982,880
- ▶ Project Funds: \$6,500,000
- ▶ Currently in final contract negotiations and planning to submit to the Board of Education an construction contract for Frank L. Blum Construction Company for \$6,379,000 on August 11, 2020



Southern High School

- ▶ Project in final phase of Design Development (DD)
- ▶ Input was received from Students, Staff, Community, Athletic Directors, Central Office Staff, Board of Education, Child Nutrition as well as designers and CMR.
 - ▶ Focus points included classroom design, parking, student service areas, administration offices, Career and Technical Education Programs, athletic needs, data layout, security, kitchen design and kitchen equipment.
- ▶ Traffic Study
 - ▶ ABSS has received final traffic analysis and civil drawings showing required site and road improvements for this project
 - ▶ Due to the location of the middle school improvements will be required for improvements at both sites
 - ▶ ABSS staff is meeting with DOT officials to discuss funding options

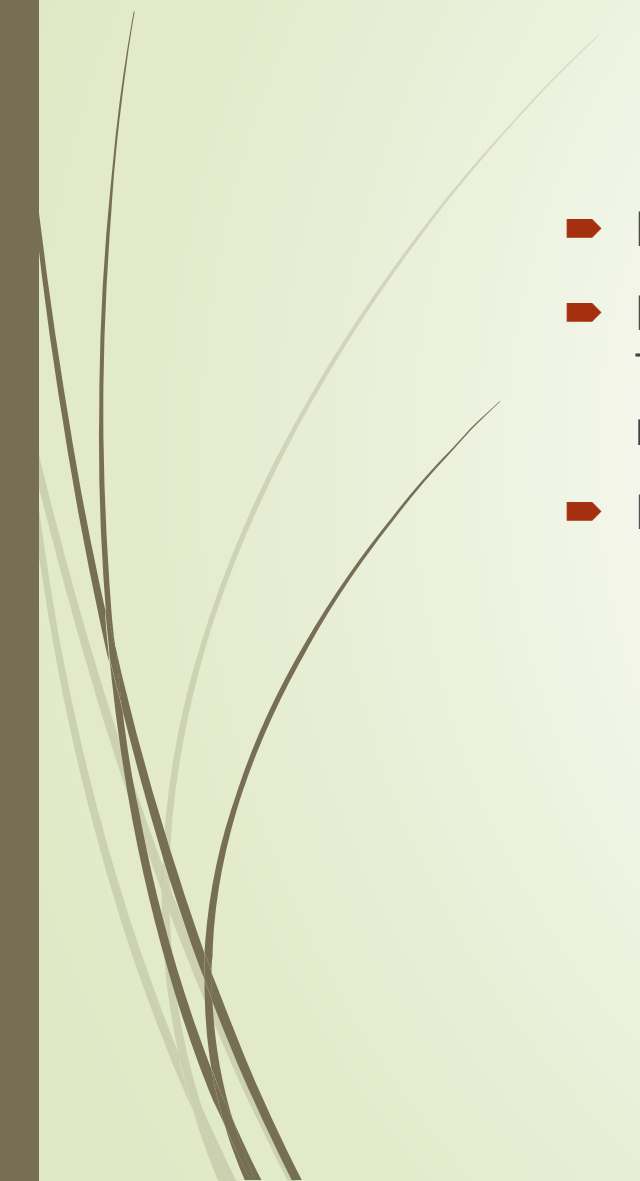


Pleasant Grove Elementary

- ▶ Project currently in the beginning phase of Schematic Design.
 - ▶ Engineers scheduled for site visit
 - ▶ Once visit is complete input from administration and staff will be solicited.

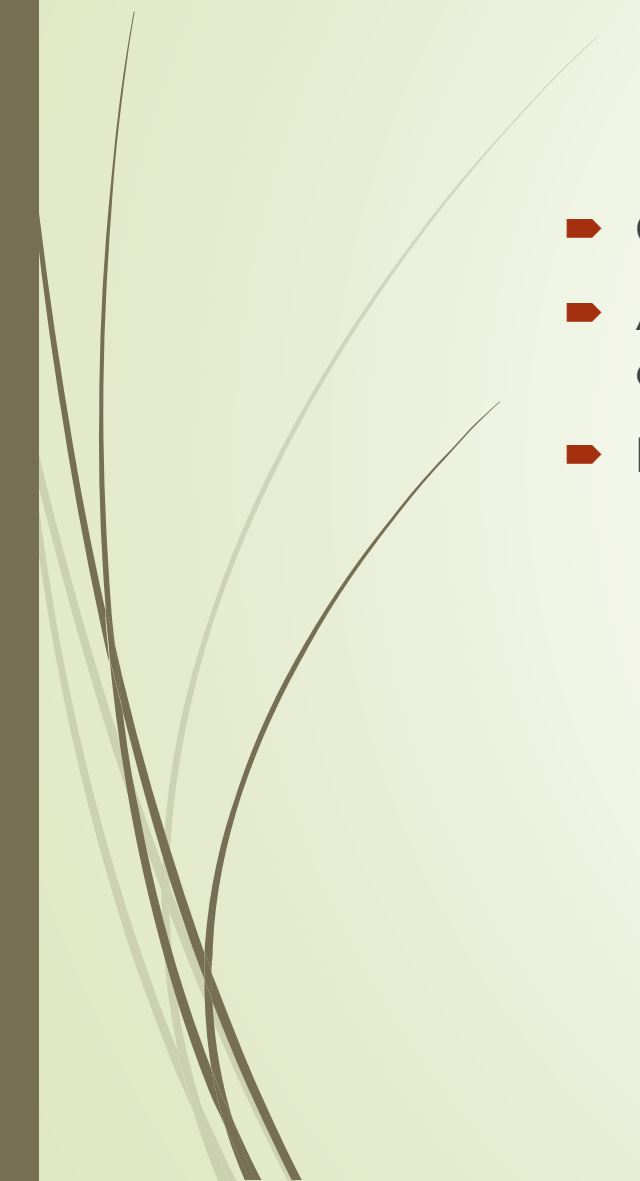


Cummings High School

- ▶ Project currently in Design Development
 - ▶ Engineers and designers have meet with administration, Career and Technical Education staff, Alamance Community College to determine needs
 - ▶ Board of Education presentation in August
- 

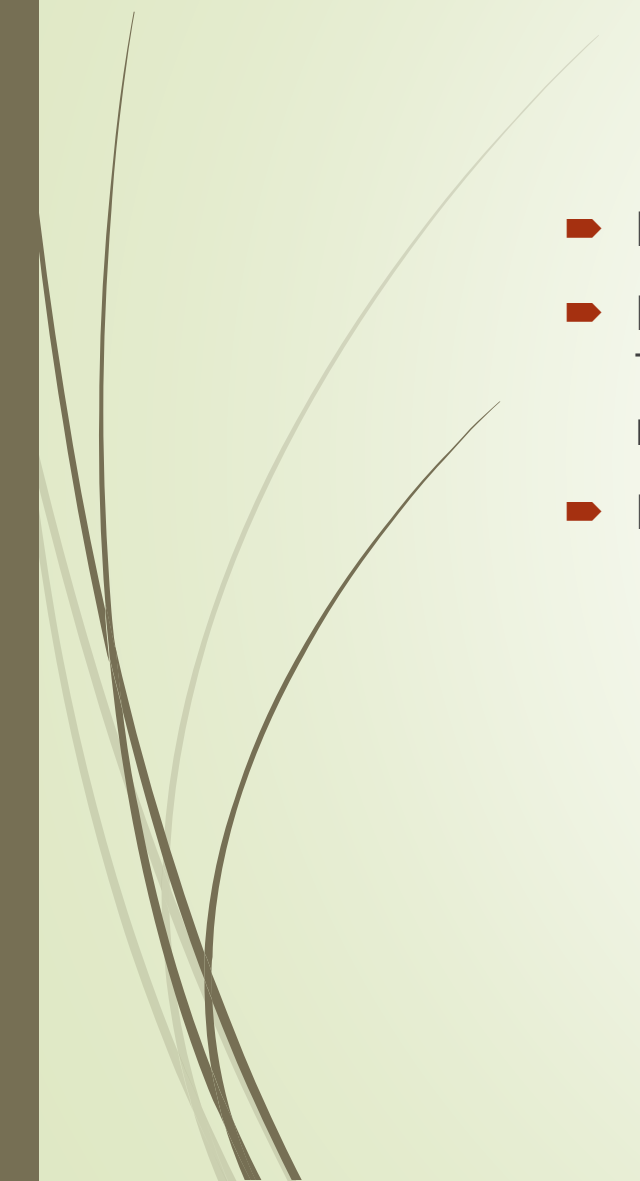


Eastern High School

- ▶ Currently in Schematic Design
 - ▶ Administrative Staff has provided input to determine building location, classroom needs, repurpose of space, etc.
 - ▶ Presentation to the Board of Education in August
 - ▶ Once BOE presentation additional stake holder input will be solicited
- 



Graham High School

- ▶ Project currently in Design Development
 - ▶ Engineers and designers have meet with administration, Career and Technical Education staff, Alamance Community College to determine needs
 - ▶ Board of Education presentation in August
- 

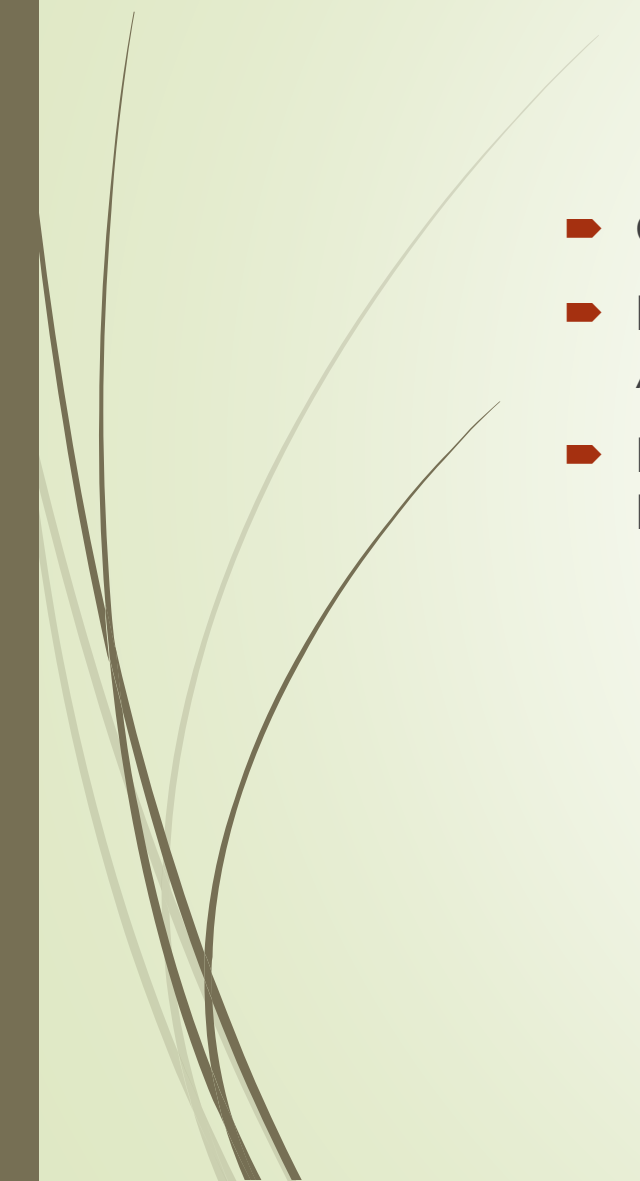


Western High School

- ▶ Currently in Schematic Design
- ▶ Administrative Staff has provided input to determine building location, classroom needs, repurpose of space, etc.
- ▶ Presentation to the Board of Education in August
 - ▶ Once BOE presentation additional stake holder input will be solicited



Williams High School

- Currently in Schematic Design
 - Presentation of Schematic Design to Walter Williams High School staff on August 6, 2020
 - Board of Education Schematic Design presentation to the Board of Education on August 11, 2020.
- 

Questions

