



---

Biotechnology Center of Excellence

Board of Trustees Presentation | May 11, 2020

# design development progress

apr

## Step #1 Design, Programming, and Facilities Coordination

Review direction of program concepts and layouts

Continue develop of overall building and site design

Develop building infrastructure and distribution systems (site utilities, mechanical, electrical, plumbing, fire protection, audiovisual, security)

may

## Step #2 Refine Strategies

Building and site design (including exterior materials)

Floor plans and building program

Building systems and capacity

Greenhouse concept

Meetings:

- ACC leadership
- ACC faculty
- ACC facilities
- Buildings & Grounds
- Board of Trustees

jun

## Step #3 Design Development Package

Documentation to include:

- drawings (building and site)
- building systems narratives
- building performance narrative
- cost estimate

SCO / ACC / City of Graham

Meetings:

- ACC leadership

jul

## Next steps Construction Documents

*exterior and site design*

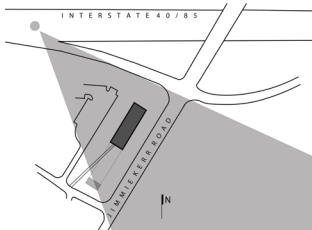
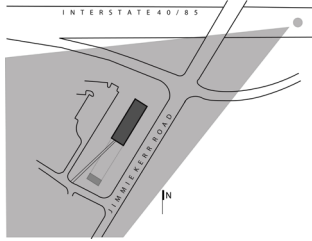
CENTER OF EXCELLENCE

GREENHOUSE (ADD ALTERNATE)

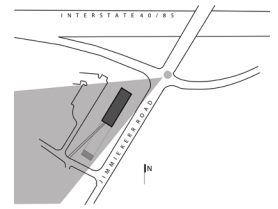
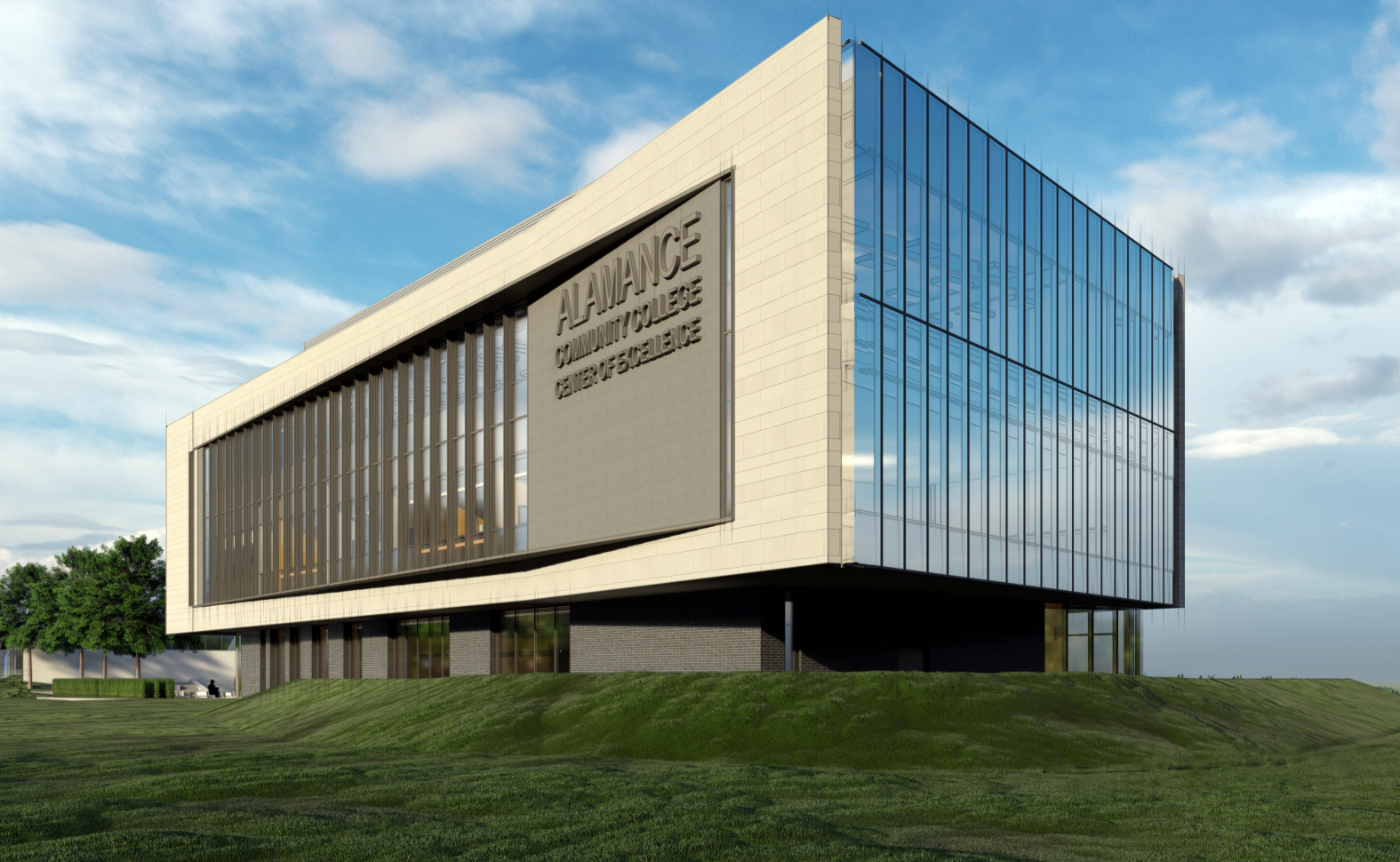




## views from 40/85

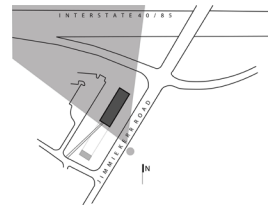


*view from northeast*



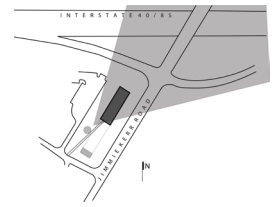


*view from southeast*



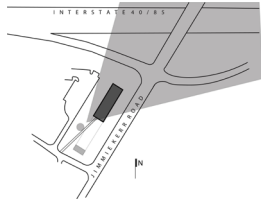


*view from southwest*

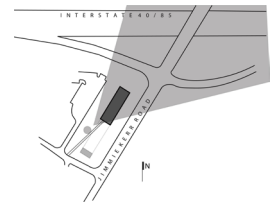
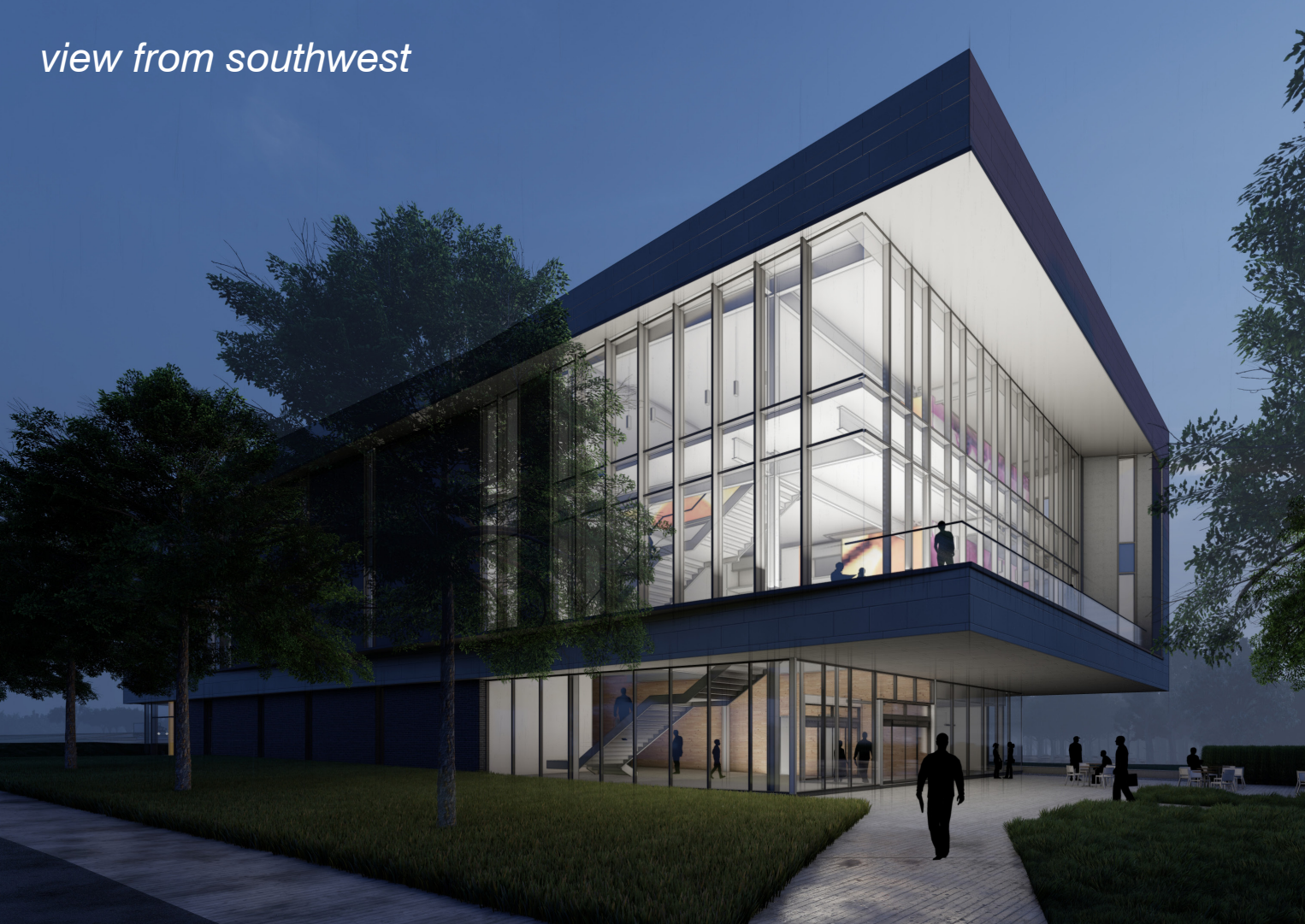




*view from southwest*

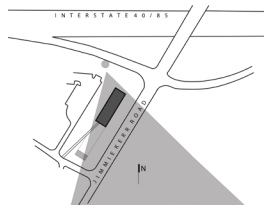


*view from southwest*

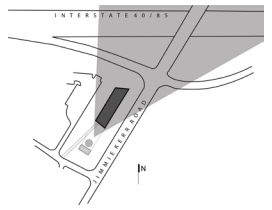




*view from northwest*

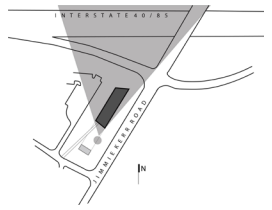


*view from terraced seating*



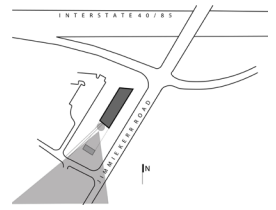


*view from plaza seating*

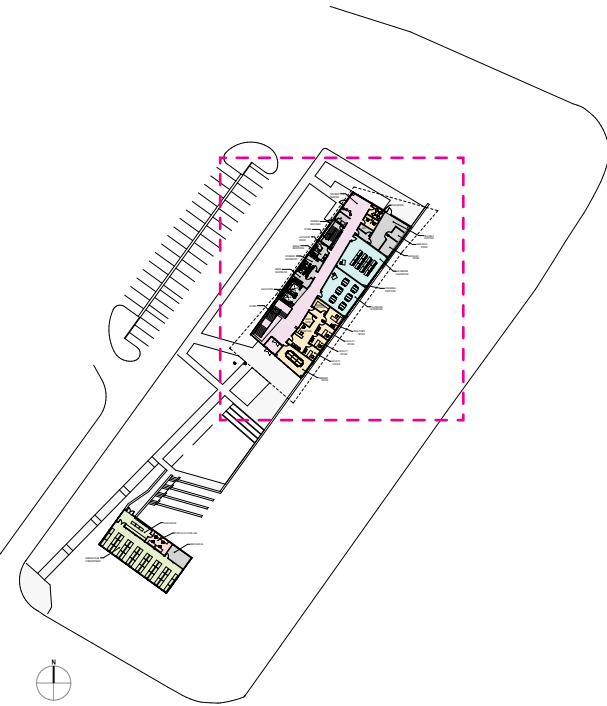




*view from entry looking south*



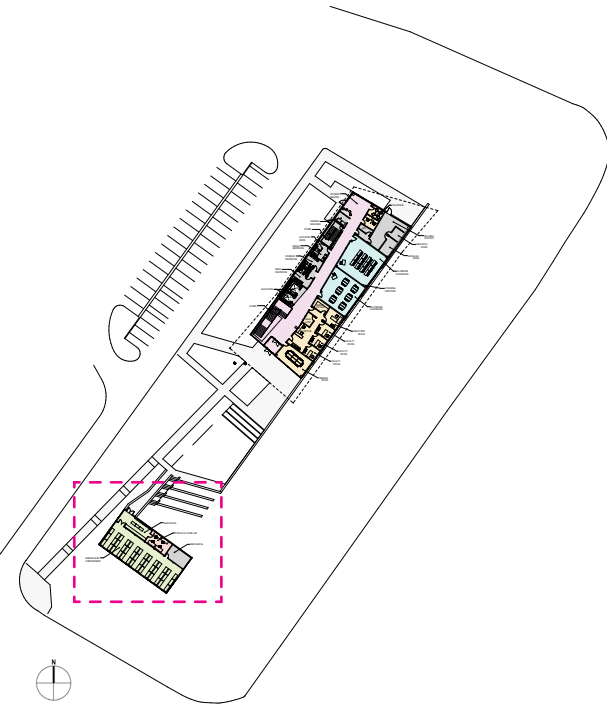
*floor plans and program*



## first floor

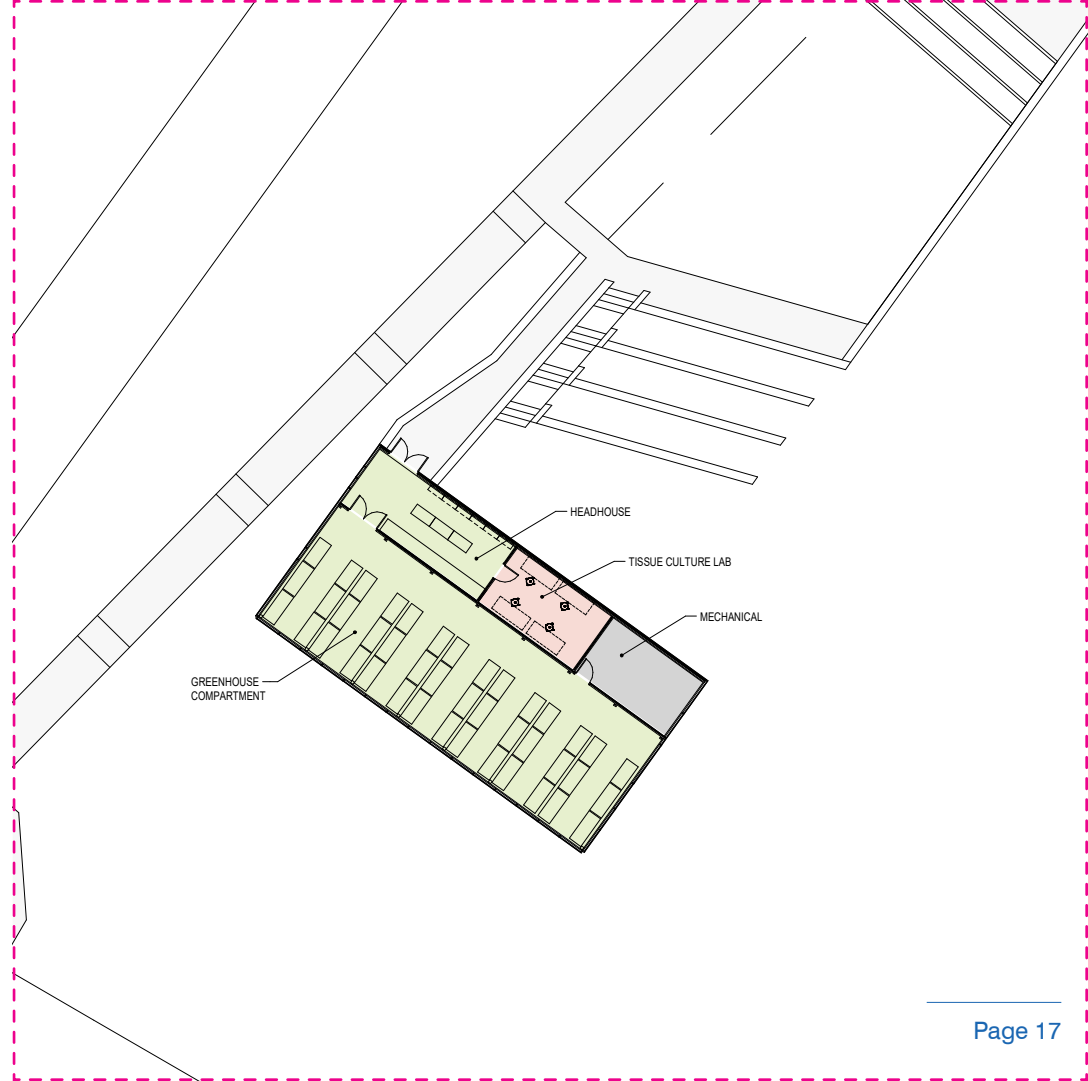
- STUDENT SPACE
- GENERAL CLASSROOMS
- GREENHOUSE (ADD ALTERNATE)
- OFFICE
- BUILDING SUPPORT



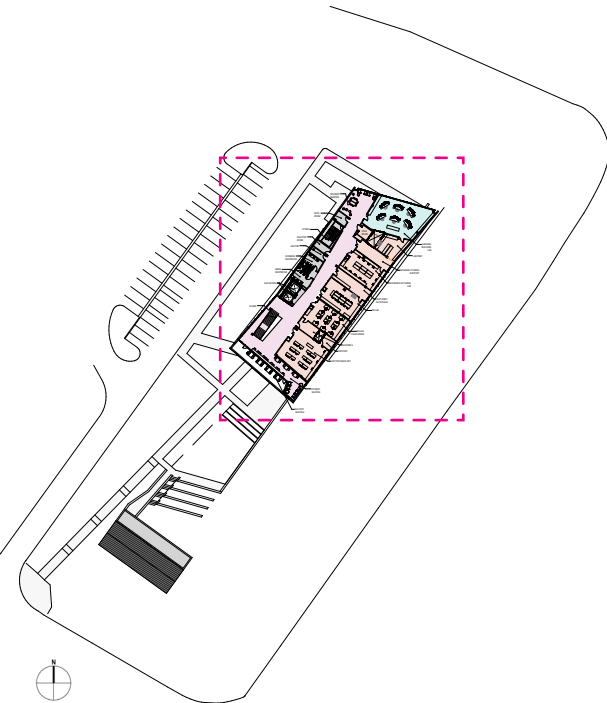


## first floor

- STUDENT SPACE
- GENERAL CLASSROOMS
- GREENHOUSE (ADD ALTERNATE)
- OFFICE
- BUILDING SUPPORT



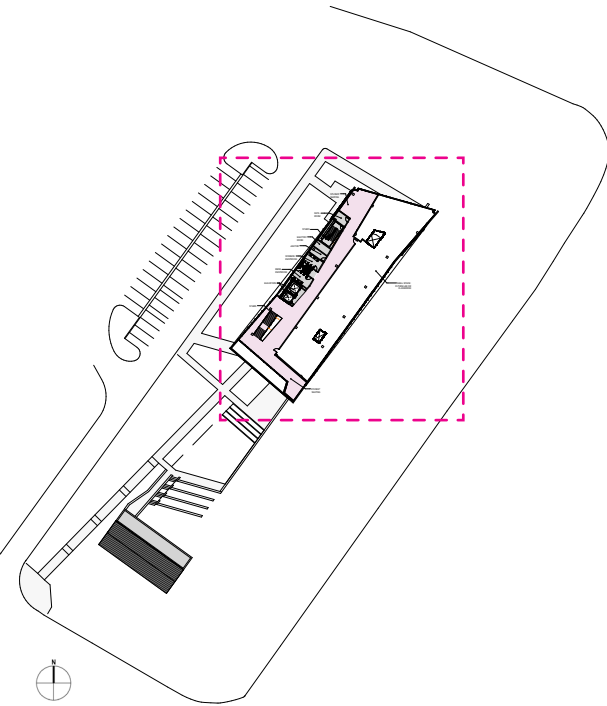




## second floor

- STUDENT SPACE
- GENERAL TEACHING LAB
- DEDICATED TEACHING LABS





### *third floor*

- STUDENT SPACE
- SHELL SPACE

