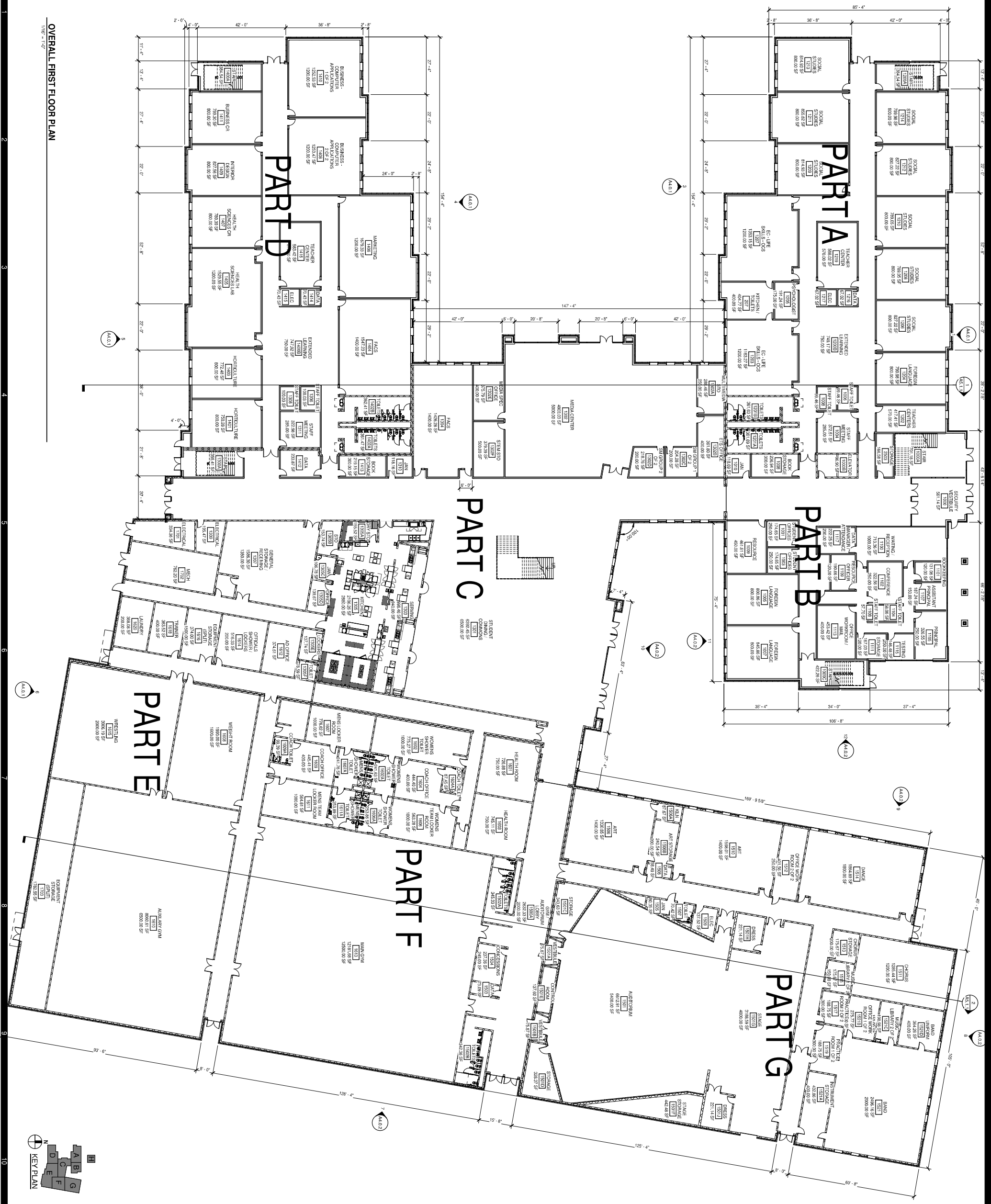


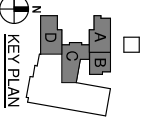
OVERALL FIRST FLOOR PLAN
1/16" = 1'-0"



<p>NEW HIGH SCHOOL 591568 ALAMANCE BURLINGTON SCHOOL SYSTEM S. NC HWY 119, NORTH CAROLINA 27258</p>	<p>PROJECT NO. 591568 DATE: 7/2019 REVISIONS: DESCRIPTION:</p>	<p>SCHEMATIC DESIGN</p>	<p>PROGRESS PRINT NOT FOR CONSTRUCTION</p>	<p>MOSELEYARCHITECTS 911 N. WEST STREET, SUITE 205 RALEIGH, NORTH CAROLINA 27603 PHONE: (919) 840-0091 MOSELEYARCHITECTS.COM</p>



1 OVERALL SECOND FLOOR PLAN
1/16" = 1'-0"



OVERALL SECOND FLOOR PLAN
A2.0.2

NEW HIGH SCHOOL
591568
ALAMANCE BURLINGTON SCHOOL SYSTEM
S. NC HWY 119, NORTH CAROLINA 27258

PROJECT NO.	591568
PROJECT NAME	NEW HIGH SCHOOL
DATE	1/16/20
DESCRIPTION	SCHEMATIC DESIGN

SCHEMATIC DESIGN

PROGRESS PRINT NOT FOR CONSTRUCTION

MOSELEYARCHITECTS

911 N. WEST STREET, SUITE 205 RALEIGH, NORTH CAROLINA 27603
PHONE (919) 840-0091
MOSELEYARCHITECTS.COM