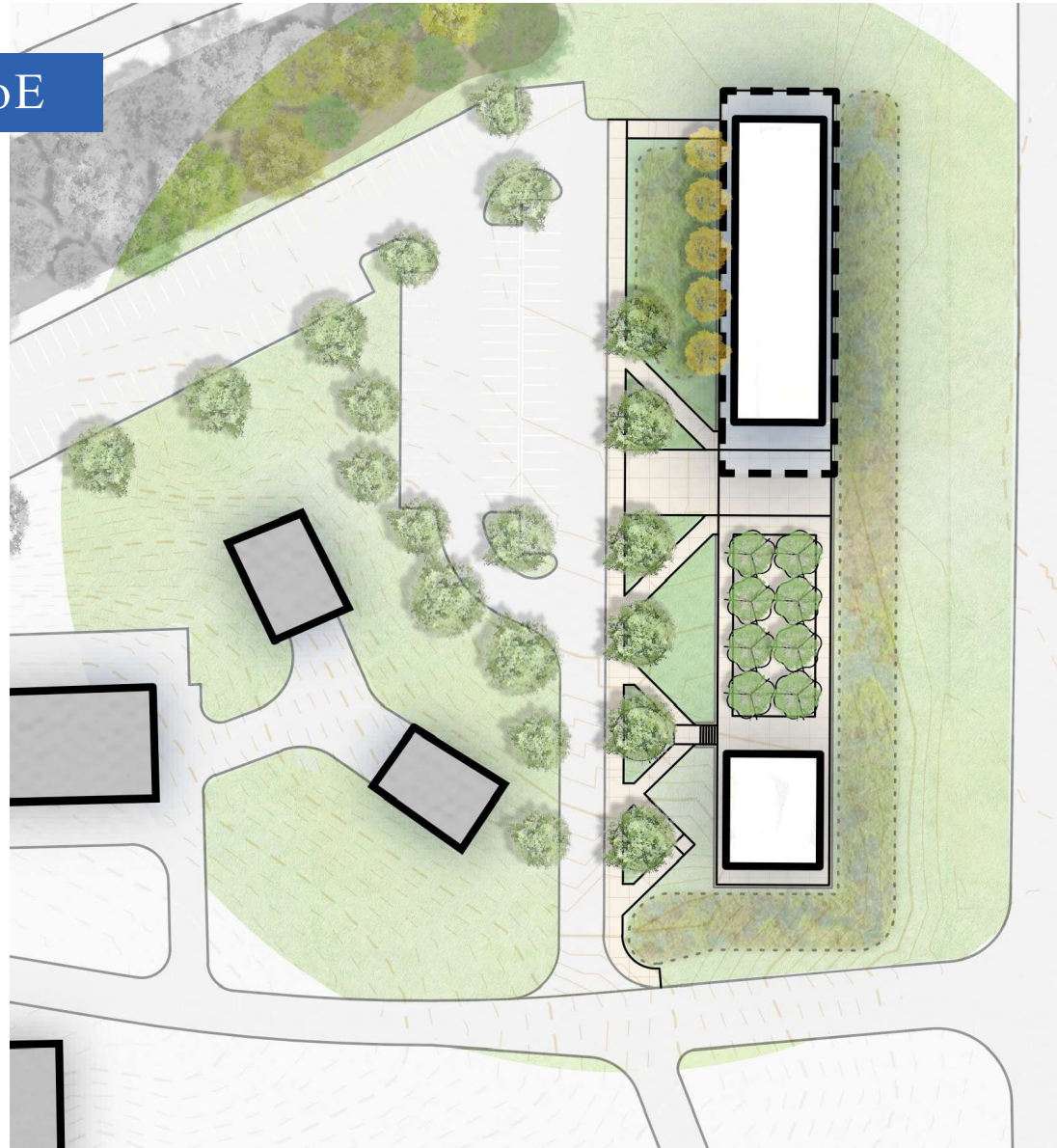
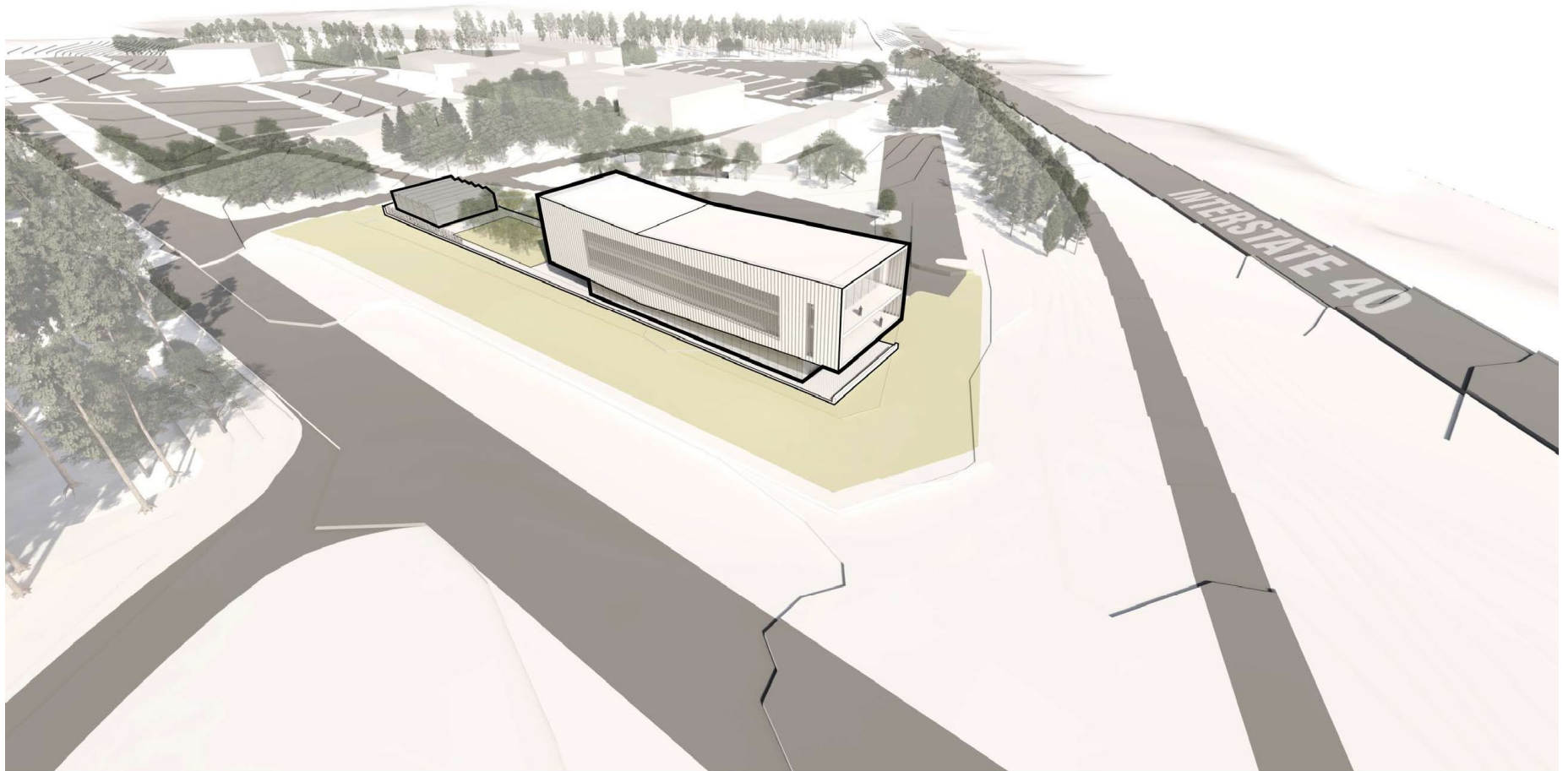


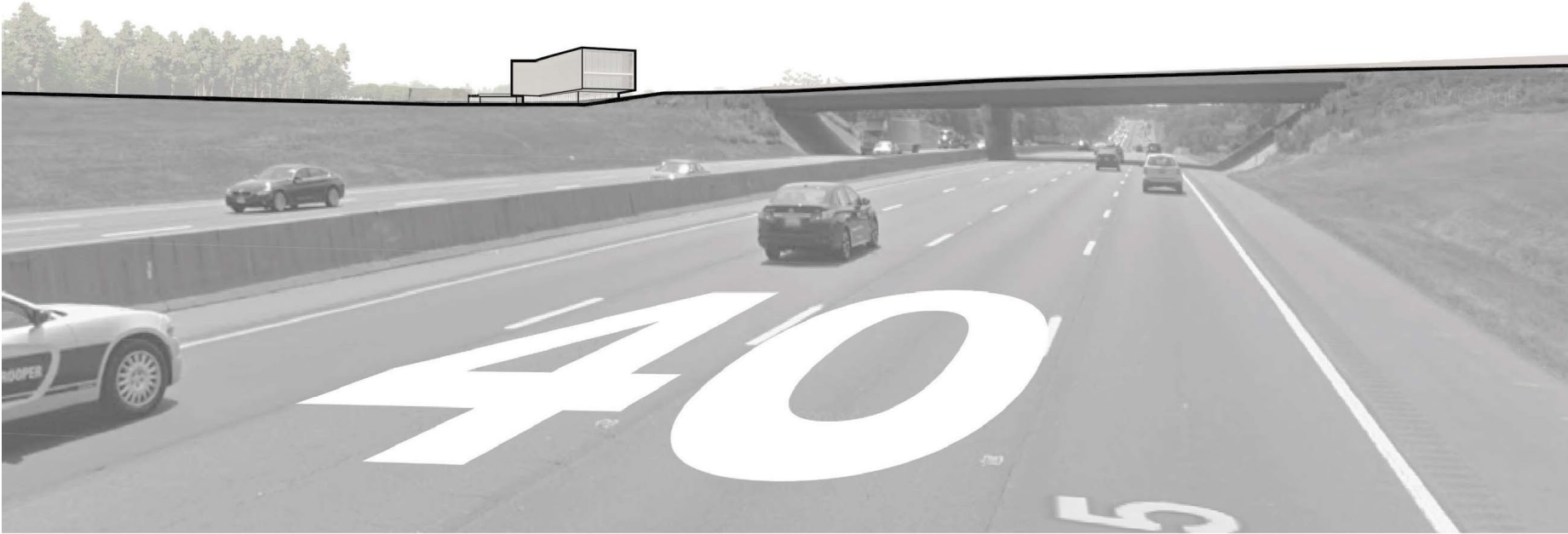
campus connection - CoE



site - birdseye view



site - view from east



site - view from west



campus stormwater management

EXISTING BUILT UPON AREA (BUA) DEMAND

3.45 acres

EXISTING TREATMENT CAPACITY

3.77 acres

0.34 acres (remainder)

PROPOSED ADDITIONAL BUA DEMAND

0.82 acres

FUTURE BUA DEMAND

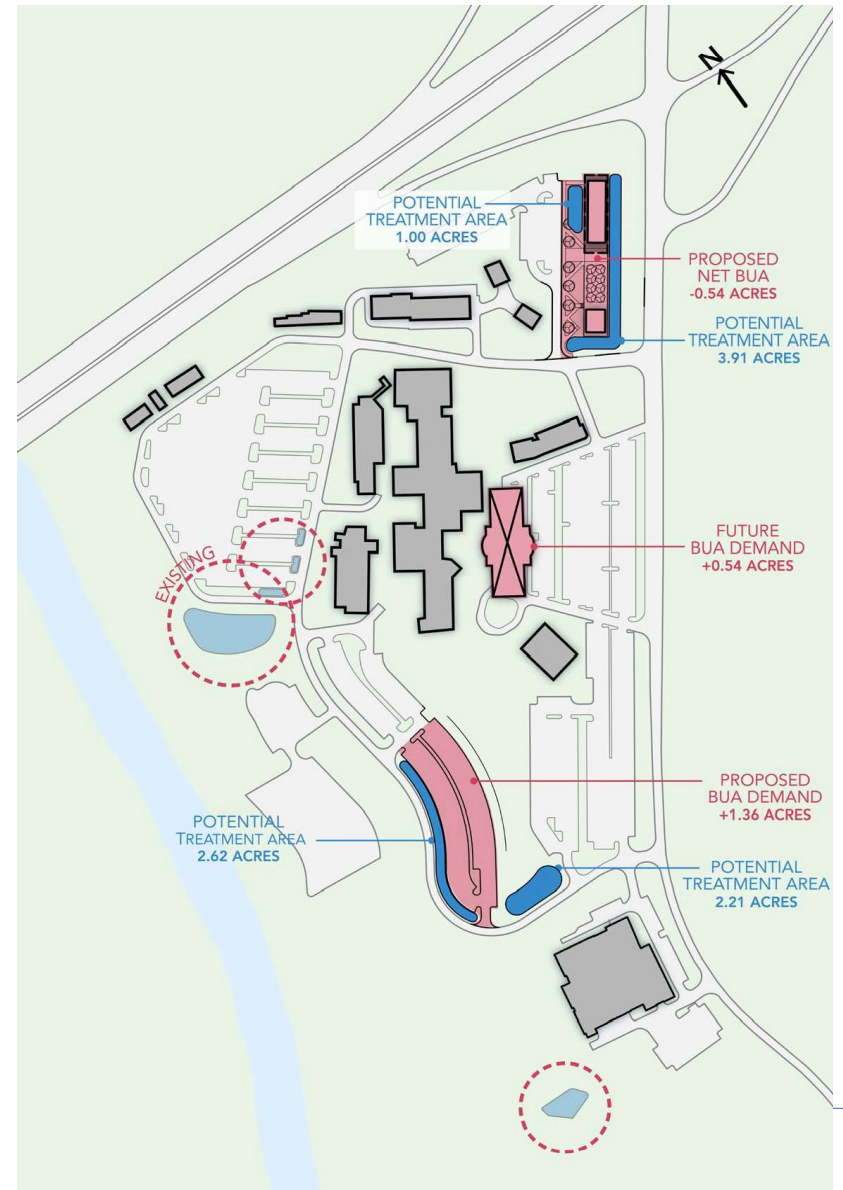
0.54 acres

TOTAL BUA DEMAND

1.36 acres

POTENTIAL ADDITIONAL TREATMENT CAPACITY

9.74 acres



parking demand update

NET PARKING DEMAND REQUIREMENTS

- 1310 spaces required (existing campus)
- + 175 spaces required (Center of Excellence)

- 1485 spaces required (proposed campus)

NET STUDENT PARKING

- 160 spaces lost (Lot L)
- + 50 spaces reallocated (Lot G)
- + 195 spaces (Lot new)

- + 85 spaces (1882 proposed total)

397
ADDITIONAL
CAPACITY

