

A photograph of a school building, identified as South Mebane Elementary, with a large yellow text overlay. The school is a two-story brick building with a flagpole in front. A parking lot filled with cars and a yellow school bus is visible in front of the building. The foreground is a grassy area with several large, leafless trees. The sky is overcast.

# South Mebane Elem.

*Addition and Renovations*

Google Earth

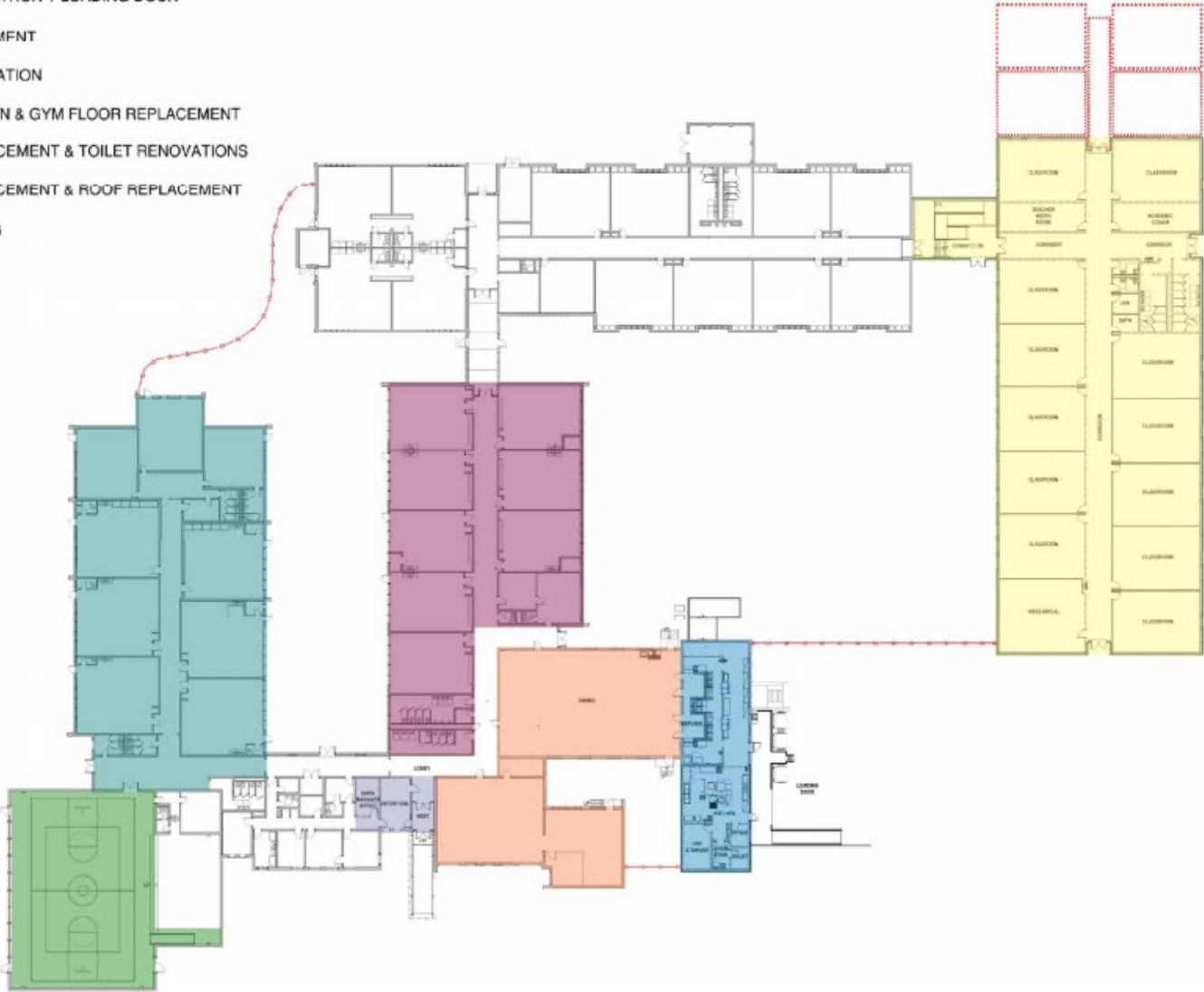
© 2018 Google

© 2019 Google

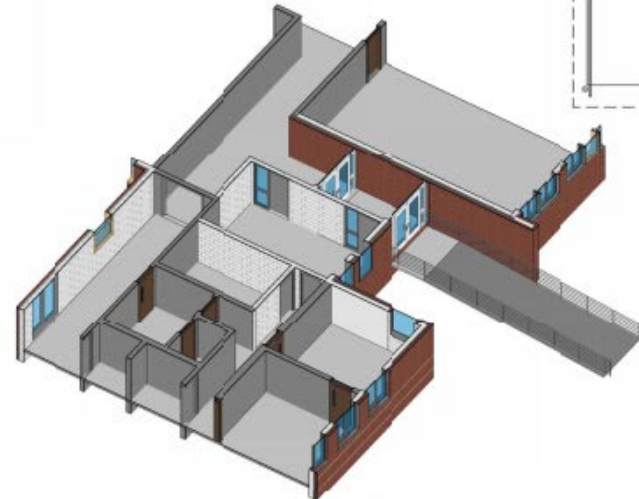
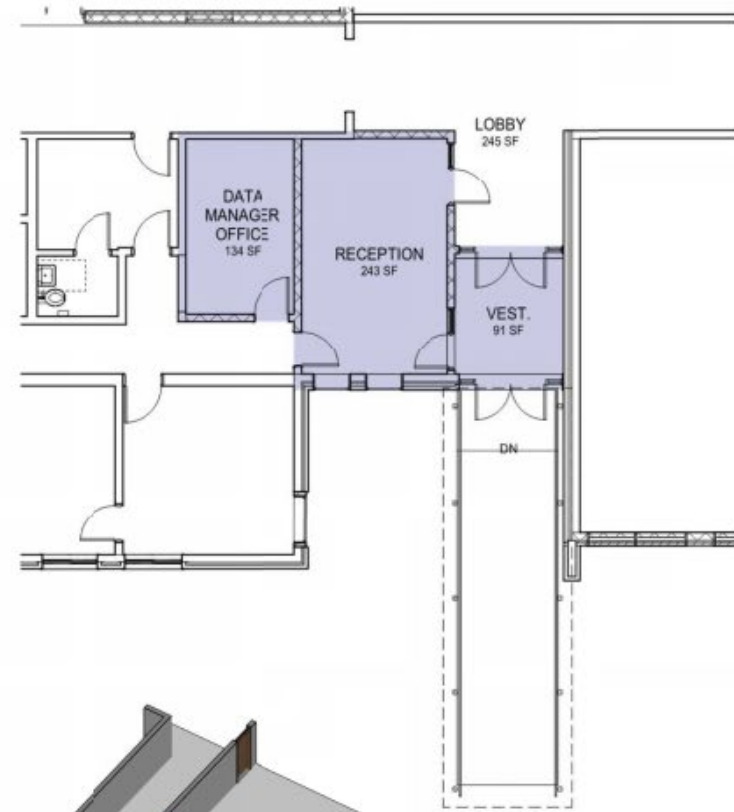
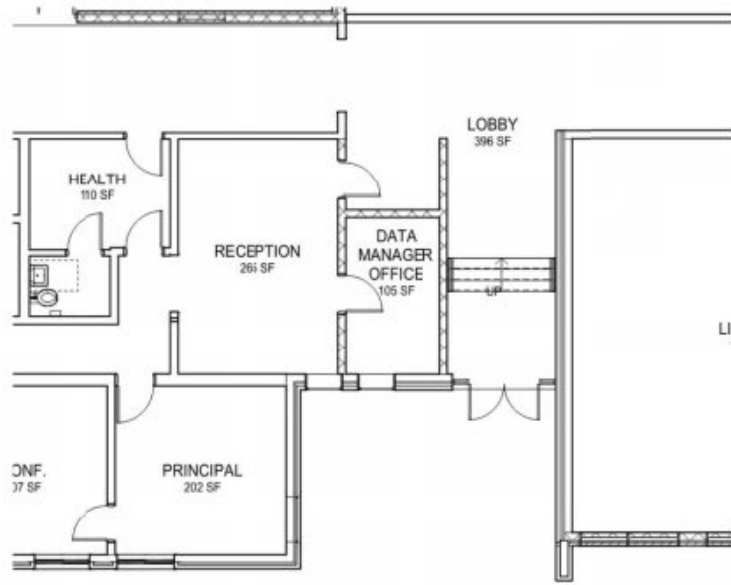
# PROJECT DESCRIPTION

## SCOPE AREAS - KEY PLAN

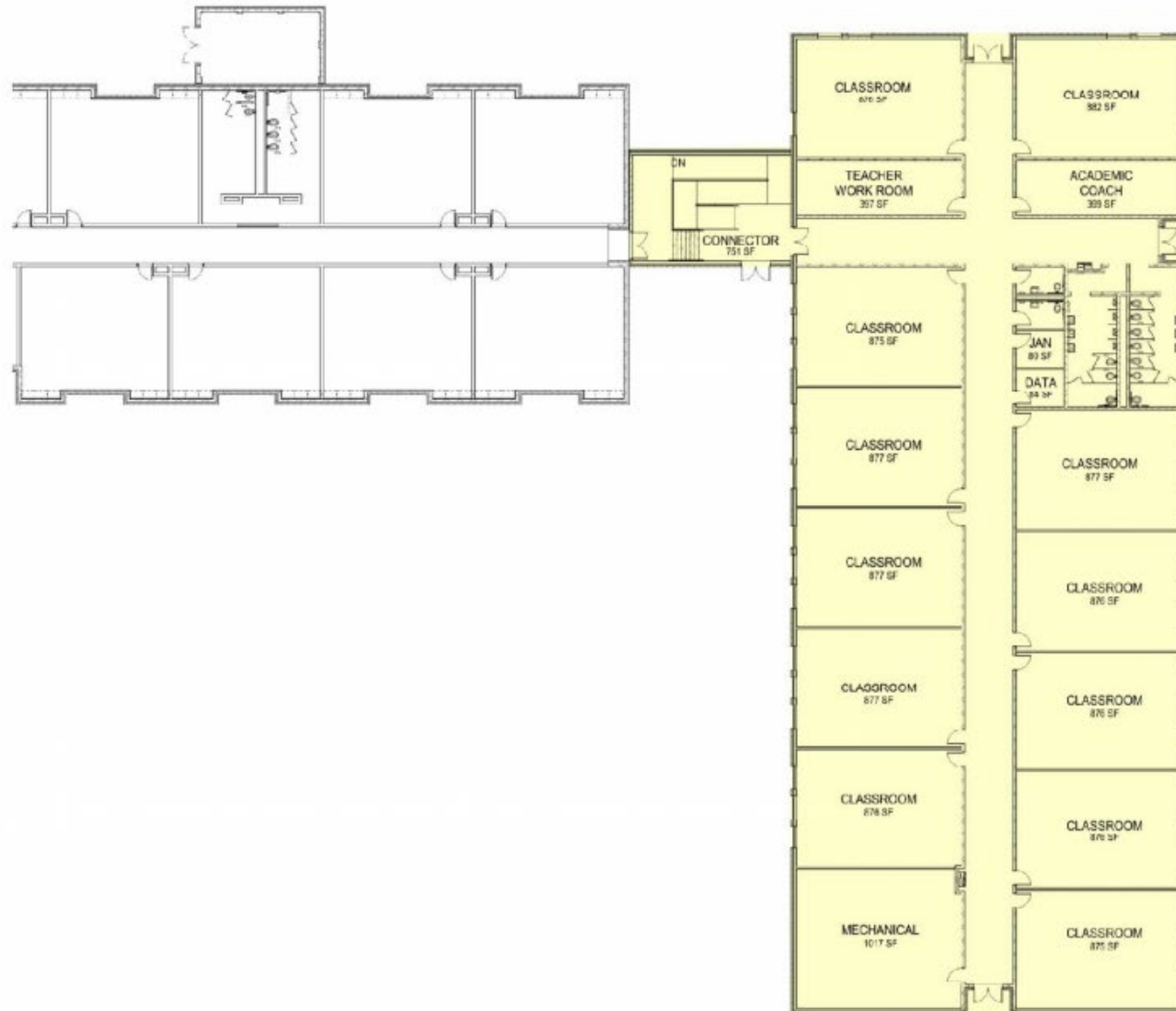
- 12 CLASSROOM ADDITION
- KITCHEN RENO/ADDITION + LOADING DOCK
- WINDOW REPLACEMENT
- ENTRANCE RENOVATION
- STAGE RENOVATION & GYM FLOOR REPLACEMENT
- CASEWORK REPLACEMENT & TOILET RENOVATIONS
- CASEWORK REPLACEMENT & ROOF REPLACEMENT
- SECURITY FENCING
- FUTURE GROWTH



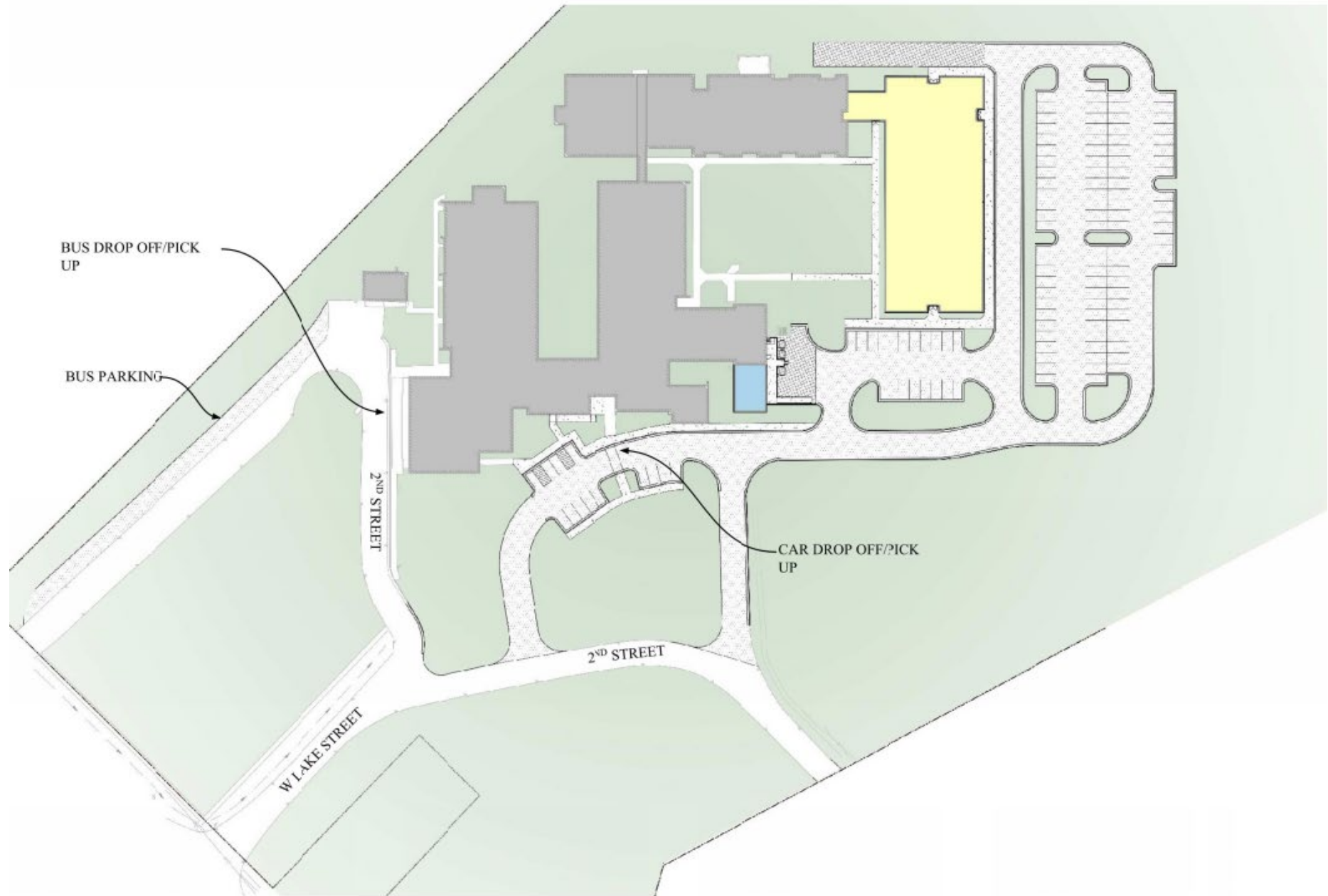
# MAIN ENTRANCE RENOVATION



# CLASSROOM WING ADDITION



# SITE IMPROVEMENTS



# CONSTRUCTION COST ESTIMATE AT SCHEMATIC DESIGN

12 classroom addition & site work_____	\$6,250,924
Kitchen addition & renovation_____	\$219,106
Main entrance renovations_____	\$265,188
Toilet renovations & casework replacement_____	<u>\$295,898</u>
	\$7,031,116

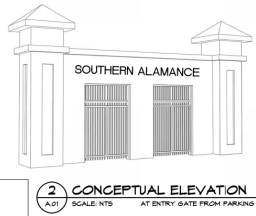
.....  
**Design, Construction, & Equipment Budget**

Construction cost_____	\$6,500,000
Construction contingency_____	\$650,000
Furniture, Fixtures & Equipment_____	\$450,000
Testing, Survey Etc._____	\$297,880
Design Fee_____	<u>\$585,000</u>
Total Bond Funds	\$8,482,880



Southern Alamance High

- COMMONS AREAS
- SCIENCE CLASSROOMS
- SCIENCE LABS
- SCIENCE PREP ROOMS
- RESOURCE ROOMS
- CLASSROOMS
- ADMINISTRATIVE AREAS
- VOCATIONAL CLASSROOMS
- VOCATIONAL INSTRUCTION AREAS
- NEX CANOPIES
- CAFETERIA ADDITION



**1** CONCEPTUAL NEW CONSTRUCTION FLOOR PLANS  
A.01 SCALE: 1/8" = 1'-0"

NEW CLASSROOM/ADMIN BUILDING - 30366 SF  
 NEW AUTOMOTIVE BUILDING - 8621 SF  
 NEW CAFETERIA ADDITION - 1923 SF  
 40910 SF

CONCEPTUAL PLANNING  
 NOT FOR  
 CONSTRUCTION

**PINNACLE ARCHITECTURE**  
 PROFESSIONAL ASSOCIATION  
 105 EAST BAY STREET, SUITE 402  
 CHARLESTON, SOUTH CAROLINA 29401  
 PH: (843) 875-5144 FAX: (843) 875-5174



DATE: 08.01.2019  
 DRAWN BY: JAE  
 PROJECT: HHS

SOUTHERN HIGH SCHOOL  
 EXISTING MASTER PLAN  
 ALAMANCE COUNTY, NORTH CAROLINA  
 CONCEPTUAL - NEW CONSTRUCTION  
 FLOOR PLANS

REVISION SCHEDULE

NO.	DATE	DESCRIPTION



**Southern Alamance High School**

1,500 Student Population  
3,220 Feet Average Queue  
970 Feet 30% High Demand  
4,190 Feet Total Desired Queue

**Existing Queue Storage**

800 Feet Queue Storage

**Proposed Queue Storage**

2,760 Feet Queue Storage

Add bus lot load High and middle school

Possibly additional parking

Right in / Right out

Exit Only

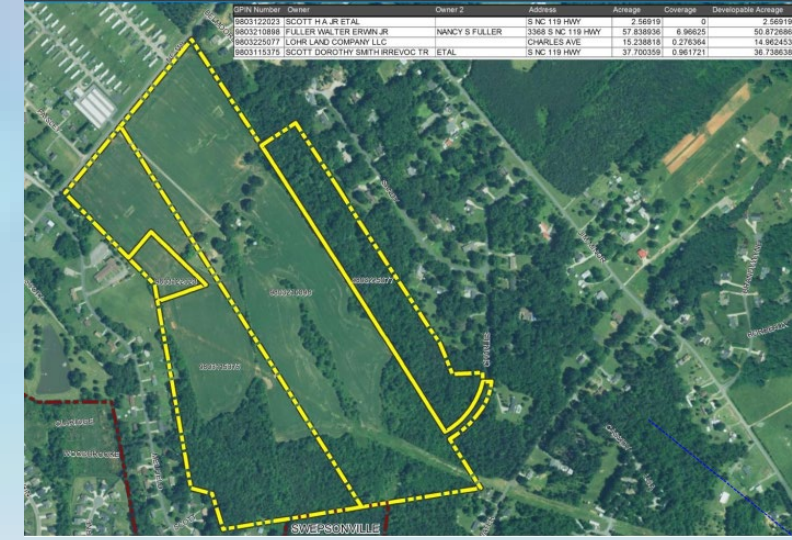
Enter Only

Entry/Exit Pair

**LEGEND**

- High School Parent Traffic
- Middle School Traffic
- Bus Traffic
- Gate

# Proposed site for New High School Hwy 119 Graham NC



# Multiple stakeholder meetings have been held to receive input on the design of the school

- Meeting with Administrative staff to detail the programming needs (see programming below)
- Interactive sessions with elected officials, Vision Group, education Council, ABSS district leaders
- Community meeting at Williams High auditorium
- High school students at CTEC campus

## New High School Alamance-Burlington School System

August 9, 2019

### ARCHITECTURAL PROGRAM WORKSHEET

New High School 1256 11589 Cases			
<b>GENERAL CLASSROOMS</b>			
English	10 @	890	8900
Foreign Language	3 @	890	2400
Social Studies	9 @	890	8010
Math	9 @	890	7920
Science	4 @	890	3200
Subtotal			27200
<b>SCIENCE</b>			
Biology Lab	3 @	1290	3600
Chemistry Lab	3 @	1630	4500
Flex Lab	1 @	1290	1290
Computer/Photo Storage	4 @	250	1000
Subtotal			10000
<b>RESOURCES/EXTRACURRICULAR EDUCATION</b>			
Resource Room	2 @	450	900
EC: Life Skills: OCS	2 @	1290	2400
Kitchen/Kolats	1 @	490	490
ISS	1 @	500	500
SSL	1 @	890	890
Subtotal			6000
<b>ARTS EDUCATION</b>			
Art	2 @	1430	2600
Storage/Kit	1 @	200	200
Band	1 @	2690	2690
Stringable Practice	2 @	390	780
Band Uniforms	1 @	490	490
Instrument Storage	1 @	490	490
Office/Workroom	2 @	250	500
Music Library/Storage	2 @	150	300
Chorus	1 @	1290	1290
Chorus Storage	1 @	290	290
Storage	1 @	1830	1830
Subtotal			12400
<b>CAREER &amp; TECHNICAL EDUCATION</b>			
Business - Computer Applications	2 @	1290	2400
Marketing	1 @	1290	1290
Business - Classroom	1 @	890	890
FACS	2 @	1430	2600
Interior Design	1 @	890	890
Health Sciences	1 @	1290	1290
Health Sciences - Classroom	1 @	890	890
Horticulture Classroom	2 @	890	1600
Ag Mechanics Lab	1 @	3500	3500
Carpentry Classroom	1 @	890	890
Carpentry Lab	1 @	2690	2690
Subtotal			17000

New High School 1256 11589 Cases			
<b>MEDIA CENTER</b>			
Main Room	1 @	5900	5900
Media Specialist Office/Workroom	1 @	490	490
ITS Office (Equipment Storage)	1 @	490	490
Music Media/periodical Storage	1 @	350	350
STEM Storage	1 @	690	690
Conference/Sm Group	2 @	290	580
Subtotal			9500
<b>DINING &amp; FOOD SERV.</b>			
Student Dining (Commons)	1 @	6690	6690
Kitchen	1 @	2980	2980
Receiving Lines	1 @	340	340
Subtotal			10010
<b>HEALTH/PHYSICAL EDUCATION</b>			
Main Gym	1 @	12500	12500
805 Locker Rooms	4 @	1000	4000
805 Toilet/Shower	2 @	600	1200
Coach Office/Toilet/Shower	2 @	490	980
Training	1 @	490	490
Laundry Room	1 @	290	290
Equipment Storage	1 @	1690	1690
Office/Storage/lockers	1 @	290	290
Concessions	1 @	340	340
Lobby	1 @	2000	2000
Auxiliary Gym	1 @	6690	6690
Weight Room	1 @	1690	1690
Weighting Room	1 @	2000	2000
Health Classroom	2 @	790	1580
AD Office	1 @	190	190
Subtotal			34700
<b>AUDITORIUM</b>			
Seating	1 @	5490	5490 690 seats
Stage/Dressing/Stor	1 @	4900	4900
Lobby	1 @	1290	1290
Subtotal			11680
<b>ADMINISTRATION</b>			
Principal's Office	1 @	290	290
Assistant Principal's Office	3 @	150	450
Waiting Reception	1 @	890	890
Data Manager/Attendance	1 @	290	290
Office Workroom/Kit	1 @	490	490
Conference	1 @	490	490
Records	1 @	225	225
Office Storage	1 @	120	120
Bookkeeping	1 @	120	120
Resource Office	1 @	120	120
Nurse's Office	1 @	390	390
Training Room	1 @	350	350
Subtotal			5500
<b>GUIDANCE &amp; COUNSELING</b>			
Reception / Waiting / Career Info	1 @	1000	1000
Conference	1 @	290	290
Counselor	3 @	150	450
Social Worker	1 @	150	150
Community Development Coordinator	1 @	150	150
Community College Coordinator	1 @	160	160
Orientation Coach	1 @	190	190
Student Office	3 @	120	360
Student Records	1 @	240	240
Psychologist Office	1 @	175	175 Located near IC
Guidance Workroom	1 @	290	290
Student Office	2 @	290	580 Located on lower level
Subtotal			7170

New High School 1256 11589 Cases			
<b>STAFF SUPPORT</b>			
Teacher Centers	5 @	570	2850
Staff Meeting Room	4 @	285	1140
Extended Learning Areas	4 @	790	3000
Subtotal			6990
<b>STORAGE</b>			
Book Storage	4 @	390	1500
General Storage/Reception	1 @	1290	1290
Subtotal			2790
<b>TOTAL ASSIGNED SQ. FOOTAGE</b>			156480
Teaching Stations:			63
<b>BUILDING SUPPORT AREAS</b>			
Circulation			
Trails			
Stairs			
Elevators			
Convector Ducts			
Mechanical/Electrical equip			
Construction (interior walls, chases, etc)			
Construction (exterior walls)			
Subtotal			66490
<b>TOTAL ORDER SQUARE FOOTAGE</b>			216140

- Moseley Architects are in the schematic design phase
- Land Negotiation
- Contracts for phase 1 study, preliminary geotechnical evaluation, and wetland delineation report for the property have been executed and waiting on execution of the offer to purchase contract
- Contract for CMR is in the final stage of negotiations with expectations of having it ready for board approval at the January meeting